



**CLEMCO**  
The Performance  
System

## TECHNICAL DATA SHEET

*Note: For safe, efficient blasting, read and follow the owner's manual and seek training for everyone who will use this equipment.*

### Purpose

The Apollo 60 HP meets ANSI standards for impact protection and OSHA standards for respiratory protection and noise limitations. The Apollo 60's full-helmet design protects the blast operator's head from rebounding abrasive and from construction-site impact hazards.

The heavy-duty cape protects the operator's neck, shoulders, and chest from rebounding abrasive.

### Requirements for Operation

The following items are required or recommended for operation, but are not included with this respirator:

- Source of Grade D (or better quality) breathing-air providing 7 to 15 cfm at 65 to 100 psi (If CAT or CCT is used, increase cfm to 20)
- A breathing-air filter (such as the Clemco CPF) to remove oil, moisture, particles, and odors
- Carbon monoxide monitor and alarm (such as the Clemco CMS-3)
- $\frac{3}{8}$ -inch respirator hose from the breathing-air filter to the helmet connection
- Protective clothing, hearing and eye protection

### Description of Operation

The Apollo 60 includes a double-shell construction helmet supported by an adjustable suspension. The operator adjusts the suspension to fit, then installs it in the helmet. A chin strap holds the helmet firmly in place.

The wide, full-view window provides an expansive field of view. An inner fixed lens seals out dust and abrasive. Up to five lightweight, disposable outer lenses, held in place by a hinged frame, protect the inner lens from pitting. As the outermost disposable lens becomes pitted, it can be torn off to expose the next lens.

## Description

The Apollo 60 HP is a Type CE, continuous-flow, supplied-air respirator for abrasive blasting, to be used with compressed air source. The high visibility red helmet has a full-view window, and a waist-length protective cape.

# Apollo 60 HP Supplied-Air Respirators

For use with  
compressed-air supply



The helmet can be purchased with one of the following:

- Constant-Flow Connector - fixed air flow (no adjustment possible)
- Air Control Valve - to adjust flow rate of incoming air
- Clem-Cool or Cool Air Tube - to cool incoming air
- Climate Control Tube - to cool or warm incoming air as needed

With all but the Constant-Flow Connector, the operator can adjust the flow of air. None of the valves can be adjusted beyond preset minimum and maximum settings specified by OSHA.

A flexible breathing tube between the valve and the helmet allows free movement of the operator's head. This tube contains specially-formulated sound-deadening materials that help the respirator comply with 80 dBA maximum noise level while allowing free air flow. The operator must wear ear plugs or other suitable hearing protection and safety glasses.

The air enters the helmet at the rear, travels through a sound-attenuating distribution system at the top, and circulates

about the operator's head and face. The incoming air maintains positive pressure inside the helmet, so exhaled air exits via the knit collar. Maintaining positive pressure inside the helmet helps keep out potentially harmful dust and abrasive.

### Advantages

- Wide, full-view window
- Lightweight construction
- Nylon carrying strap
- Allows operator to wear supplementary hearing and primary eye protection

### Approvals and Certification

- NIOSH-approved Type CE continuous flow supplied-air respirator
- NIOSH approval no. TC-19C-358
- OSHA Assigned Protection Factor: 1,000 times PEL for hazardous substances
- ANSI Z89.1-2003 Type 1, Class G protective helmet (hard hat)
- ANSI Z 3.19: Noise Reduction Rating — 8 dB

**NOTE: Prior to use, ensure that the Apollo, type CE, supplied-air respirator is appropriate for your specific blasting conditions and requirements.**

## Respirator Systems and Accessories

Description	Stock No.
<b>Apollo 60 HP</b>	
Less Respirator Hose	
With CFC .....	21300
With ACV .....	10505
With CAT .....	10508
With CCT .....	10509
With 50 ft x 3/8" Respirator Hose	
With CFC .....	20213
With ACV .....	10510
With CAT .....	10511
With CCT .....	10512
With 50 ft x 3/8" Respirator Hose and CPF-20 Filter	
With CFC .....	20214
With ACV .....	10513
With CAT .....	10514
With CCT .....	10515

## Options and Accessories

Description	Stock No.
CPF-20 air filter (for one or two operators) .....	03578
CPF-80 air filter (for up to four operators) .....	03527
Carbon monoxide alarm, CMS-3 .....	24612
Heavy-duty blast suit (leather front, cotton back)	
<b>S</b> <b>M</b> <b>L</b> <b>XL</b> <b>2XL</b> <b>3XL</b>	
(08920) (08921) (08922) (08923) (24201) (24202)	
Lightweight seasonal blast suit (nylon front, cotton back)	
<b>S</b> <b>M</b> <b>L</b> <b>XL</b> <b>2XL</b> <b>3XL</b>	
(22913) (22914) (22915) (22916) (22917) (25022)	
Leather gloves .....	02243
Low pressure conversion kit.	
(converts HP helmet to LP helmet) .....	22079
Incompatible hose coupling conversion kit .....	28074

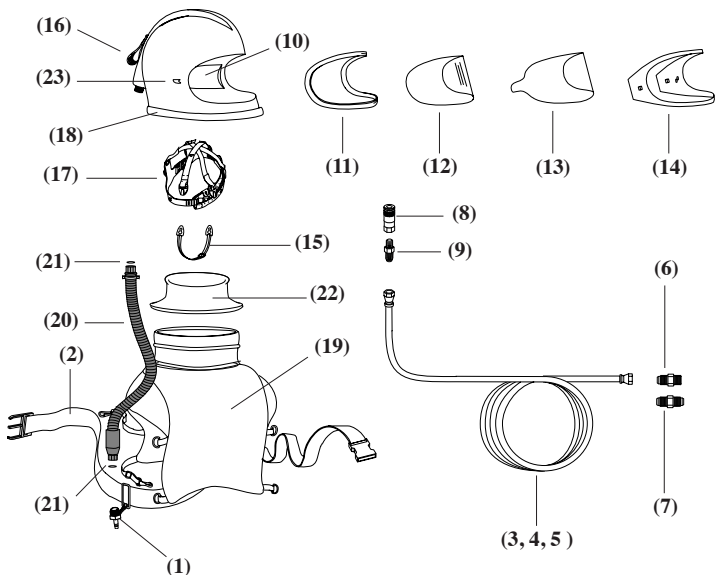
## Shipping Dimensions and Weights

Description.	Dimensions	Weight
Apollo 60 Respirator	14.5" x 13" x 15"	9 lbs
Respirator hose, 50 ft x 3/8"	12" x 12" x 12"	7 lbs
CPF-20 Breathing-air Filter	21" x 20" x 10"	21 lbs
20213 Respirator and hose		15.5 lb

Authorized Distributor:

## Replacement Parts

Item	Description	Stock No.
1.	Constant-Flow Connector, without belt .....	21415
2.	Belt assembly, 2" .....	04430
3.	Respirator hose, 3/8" x 25' (includes 7 & 8) .....	04397
4.	Respirator hose, 3/8" x 50' (includes 7 & 8) .....	04415
5.	Respirator hose, 3/8" x 100' (includes 7 & 8) .....	04398
6.	Adaptor, 3/8" hose to 3/8" pipe .....	00022
7.	Union, 3/8" hose to 3/8" hose .....	01020
8.	Disconnect, 1/4" female .....	00025
9.	Adaptor, 3/8" hose to 1/4" pipe .....	01019
10.	Acoustical foam kit, sides .....	04369
11.	Gasket, window .....	04452
12.	Inner lens, .040" (5) .....	04367
13.	Outer lens, .0075", perforated (25) .....	25020
14.	Window frame kit .....	08741
15.	Chin strap .....	04460
16.	Handle strap .....	03623
17.	Suspension .....	10532
18.	Cape attachment strap .....	10534
19.	Cape, red, with black inner collar .....	04435
20.	Breathing tube assembly (each includes two of item 21)	
	Standard tube 33" long .....	22811
	Alternate tube, 27" long .....	28068
	Alternate tube, 37" long .....	28069
21.	O-ring, 11/16" ID x 7/8" OD, 2 required .....	22815
22.	Inner collar kit .....	08740
23.	Window latch kit .....	04368
(-)	Apollo 60 HP Owner's Manual .....	10533



ISO 9001 certified. Clemco is committed to continuous product improvement. Specifications are subject to change without notice.

© 2018 Clemco Industries Corp. • One Cable Car Drive • Washington, MO 63090 • Phone (636) 239-4300 • Fax (800) 726-7559

Stock No. 21961

www.clemcoindustries.com

0698 Rev. E: 02/18