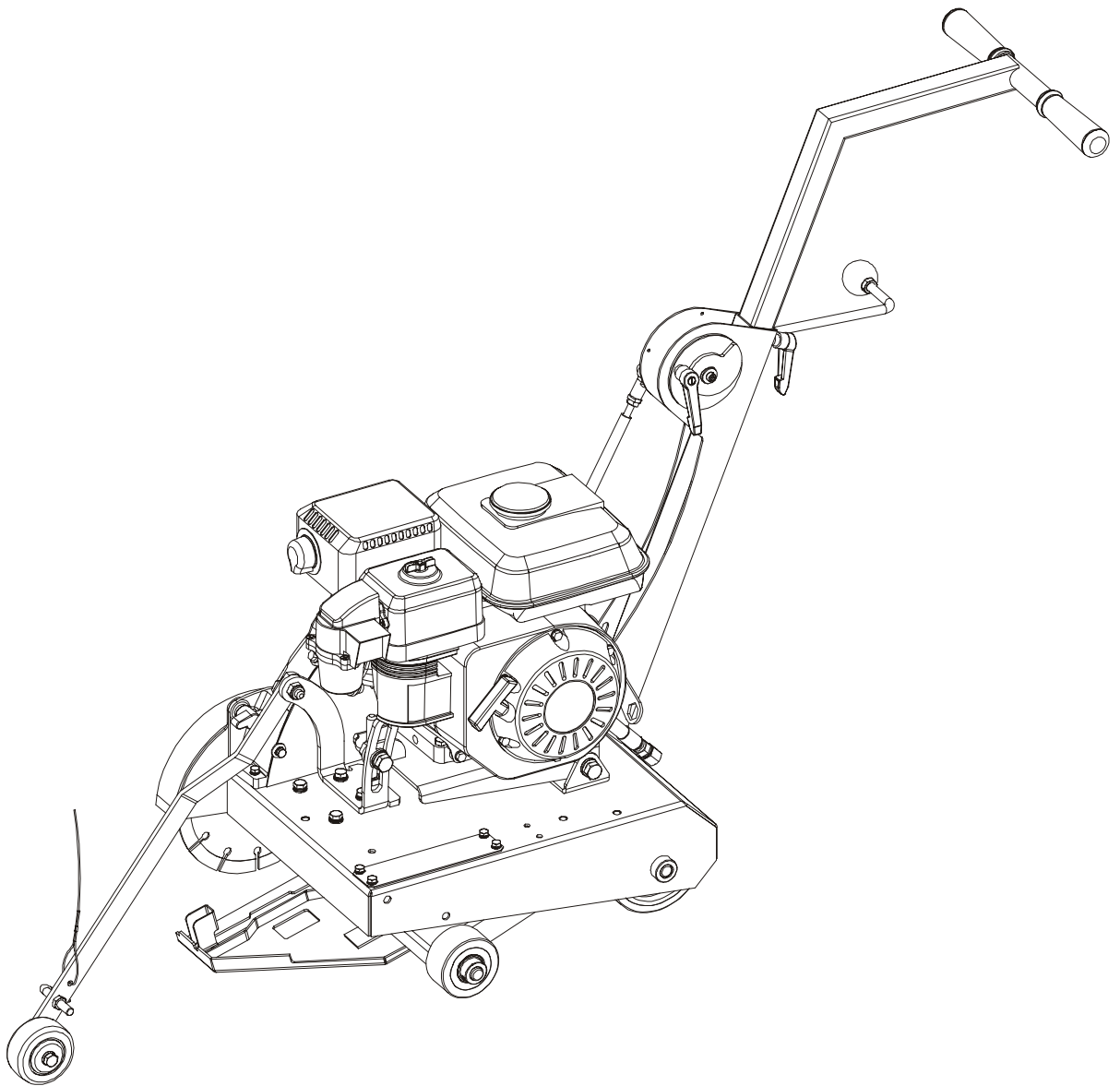


# TARGET<sup>®</sup>

April 1, 2004

## MG-8 / MG-10

*Operator Manual*



542201018



**BEFORE YOU BEGIN:** Read and understand all warnings and instructions before operating the Machine described in this manual. **WARNINGS AND CAUTIONS IN THIS MANUAL MUST BE UNDERSTOOD AND FOLLOWED! FAILURE TO OBEY WARNINGS MAY RESULT IN SERIOUS INJURY OR DEATH. IT IS YOUR RESPONSIBILITY** to make sure persons who use this machine have read this manual.

If you have any questions about this machine and/or the operating instructions, **DO NOT** use the Machine until you have contacted Target and we have advised you!

<b>CONTENTS</b>	<b>PAGE NO.</b>
<b>SAFETY WARNINGS – DO’s &amp; DO NOT’s</b>	4 – 5
Pre-Operation Checklist / Maintenance Schedule	6
Features	7
General Instructions	7
Check Before Operating	8
Starting the Saw	8
Operating Instructions	8
Application Guide	8
Maintenance	9
Important Advise	9
Repairs	10
Service Parts	10
Reference Information	19
Decal Information	14
Model Specifications	15
Model Dimensions	16
Part Identification	17
Company and Contact Information	Back Cover

# SAFETY FIRST!



**WARNING: FAILURE TO COMPLY WITH THESE WARNINGS AND OPERATING INSTRUCTIONS COULD RESULT IN DEATH OR SERIOUS BODILY INJURY.**

## DO

- DO Read this entire operator's manual before operating this machine. Understand all warnings, instructions, and controls.
- DO Keep all guards in place and in good condition.
- DO Wear safety-approved hearing, eye, head and respiratory protection.
- DO Read and understand all warnings and instructions on the machine.
- DO Read and understand the symbol definitions contained in this manual.
- DO Keep all parts of your body away from the blade and all other moving parts.
- DO Know how to stop the saw quickly in case of emergency.
- DO Shut off the engine and allow it to cool before refueling.
- DO Inspect the blade, flanges and shafts for damage before installing the blade.
- DO Use only steel center diamond blades manufactured for use on concrete saws.
- DO Use only the blade flanges supplied with the saw. Never use damaged or worn blade flanges.
- DO Use only blades marked with operating speed rated at 5000 RPM or higher. Maximum 10" diameter, 5/8" arbor.
- DO Verify saw drive configuration by checking blade shaft RPM, pulley diameters, and blade flange diameter.
- DO Read all safety materials and instructions those accompany any blade used with this saw.
- DO Inspect each blade carefully before using it. If there are any signs of damage or unusual wear, **DO NOT USE THE BLADE.**
- DO Mount the blade solidly and firmly, Wrench tightens the arbor nut.
- DO Make sure the blade and flanges are clean and free of dirt and debris before mounting the blade on the saw.
- DO Use dry cutting diamond blades with a 5/8" diameter arbor only. Never use damaged or worn blade flanges.
- DO Use the correct blade for the type of work being done. Check with blade manufacturer if you do not know if blade is correct.
- DO Use caution and follow the instructions when loading and unloading the saw.
- DO Operate this machine only in well-ventilated areas.
- DO Instruct bystanders on where to stand while the saw is in operation.
- DO Establish a training program for all operators of this machine.
- DO Clear the work area of unnecessary people. Never allow anyone to stand in front of or behind the blade while the engine is running.
- DO Move the machine at least 10 feet (3 meters) from the fueling point before starting the engine and make sure the gas cap on the machine and the fuel can is properly tightened.
- DO Make sure the blade is not contacting anything before starting the engine.
- DO Use cautions when lifting and transporting this machine.
- DO Always tie down machine when transporting.
- DO Always check for buried electrical cables before sawing. If unsure, contact the local utilities.
- DO Clean the machine after each day's use.
- DO Always give a copy of this manual to the equipment user. If you need extra copies, call TOLL FREE 1-800-288-5040.

## SAFETY FIRST!



**WARNING: FAILURE TO COMPLY WITH THESE WARNINGS AND OPERATING INSTRUCTIONS COULD RESULT IN DEATH OR SERIOUS BODILY INJURY.**

### DO NOT

- DO NOT** Operate this machine unless you have read and understood this operator's manual.
- DO NOT** Operate this machine without the blade guard, or other protective guards in place.
- DO NOT** Stand behind or in front of the blade path while the engine is running.
- DO NOT** Leave this machine unattended while the engine is running.
- DO NOT** Work on this machine while the engine is running.
- DO NOT** Operate this machine when you are tired or fatigued.
- DO NOT** Exceed maximum blade speed shown for each blade size. Excessive speed could result in blade breakage.
- DO NOT** Use damaged equipment or blades.
- DO NOT** Touch or try to stop a moving blade with your hand.
- DO NOT** Cock, jam, wedge or twist the blade in a cut.
- DO NOT** Transport a cutting machine with the blade mounted on the machine.
- DO NOT** Use a blade that has been dropped or dropped.
- DO NOT** Touch a dry cutting diamond blade immediately after use. These blades require several minutes to cool after each cut.
- DO NOT** Use damaged or worn blade flanges.
- DO NOT** Allow other persons to be near the machine when starting, refueling, or when the saw is in operation.
- DO NOT** Operate this machine in an enclosed area unless it is properly vented.
- DO NOT** Operate this machine in the vicinity of anything that is flammable. Sparks could cause a fire or an explosion.
- DO NOT** Allow blade exposure from the guard to be more than 180 degrees.
- DO NOT** Operate this machine while using drugs or alcohol.
- DO NOT** Operate this machine with the belt guard or blade guard removed.
- DO NOT** Operate this machine unless you are specifically trained to do so.
- DO NOT** Use a blade that has been over heated (Core has a bluish color)
- DO NOT** Jam material into the blade.
- DO NOT** Grind on the side of the blade.
- DO NOT** Tow this machine behind a vehicle.

\*\*\*\*\*

**This saw was designed for certain applications only. DO NOT modify this saw or use for any application other than for which is it was designed. If you have any questions relative to its application, DO NOT use the saw until you have written Electrolux Construction Products, North America. And we have advised you.**

**Electrolux Construction Products, North America  
17400 West 119th Street  
Olathe, Kansas 66061**

# PRE-OPERATION CHECK LIST



Before leaving our factory, every machine is thoroughly tested. Follow our instruction strictly and your machine will give you long service in normal operating conditions.



Before starting up the machine, make sure you read this entire operations manual and are familiar with the operation of the machine.

## WITH MACHINE COLD AND SETTING LEVEL:

Check engine oil. Fill to full mark on dipstick with 10W30 oil. DO NOT OVERFILL!

## 1 - 2 HOUR OPERATION CHECK:



**ALWAYS** park machine on a level surface with the engine “OFF” and the engine switch set in the “OFF” position before performing any maintenance. Let the machine cool off!!

Tension the blade drive Poly-V belts. DO NOT over tension!!

## SCHEDULE MAINTENANCE QUICK REFERENCE:



Before performing any maintenance, **ALWAYS** park the machine on a level surface with the engine “OFF” and the engine switch set in the “OFF” position.

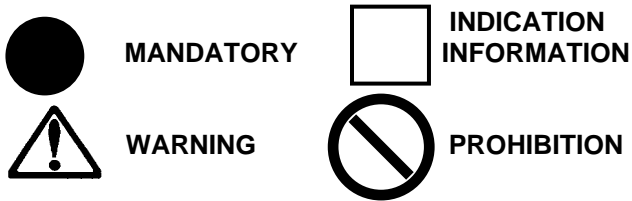
### **SERVICE DAILY:**

1. Check engine oil level.
2. Check blade guard for damage.
3. Check engine air filter, replace if dirty.
4. Check blade drive Poly-V belt tension. DO NOT over tension!!!

### **SERVICE EVERY 50 HOURS:**

1. Replace engine oil and filter.
2. Clean engine air fins.
3. Check wheels for wear or damage.

**NOTE:** See engine manual for specific engine maintenance for your specific model.



These signs will give advice for your safety

**Before leaving our factory every machine is thoroughly tested.**

*Follow our instructions strictly and your machine will give you long service in normal operating conditions.*

## 1. Features

**Use:** Dry sawing of concrete or pavement.  
**Tools:** Diamond blades -- dry only  
 Ø: 8 - 10" (20 – 25cm) with 5/8" (16mm) arbors

*(For information contact your Target supplier)*

**Depths of Cut (Maximum):**  
 2.50" with Ø 8" / 3.50" with Ø 10"

**Nominal Weight:**  
 Ø 8" 109 lb. (49.4 kg) 4 HP Honda  
 Ø 8" 115 lb. (52.2 kg) 6.5 HP Honda  
 Ø 10" 115 lb. (52.2 kg) 4 HP Honda  
 Ø 10" 120 lb. (54.4 kg) 6.5 HP Honda

**Dimensions (L x W x H):**  
 18.25" x 13" x 25.70"  
 (46.4 x 33 x 65.3 cm)

**Blade Shaft RPM:**  
 8" (20cm) - 3600 Maximum  
 10" (25cm) – 3600 Maximum

**Before starting up machine make sure you read these instructions and are familiar with the operation of this machine.**

**The working area must be completely clear, well lit and all safety hazards removed (no water or dangerous objects in the vicinity)**

**The operator must wear protective clothing appropriate to the work he is doing. We recommend hearing, respiratory and eye protection.**

**Any persons not involved in the work, should leave the area.**

**Use only blades marked with a maximum operating speed greater than the bladeshaft speed.**

## 2. General Instructions

- Use ONLY general-purpose dry cutting diamond blades intended for use on power saws - speed rate at 3600 RPM or higher, maximum 10" (25cm) diameters.

**WARNING: This saw is intended to operate with dry cutting diamond blades with a 5/8" (15mm) diameters arbor ONLY.**

- Always turn the engine off prior to mounting, removing or changing blades or adjusting the guard, guide frame or other accessories.
- Make sure that both blade flanges are clean and free from burrs and/or foreign matter. Do not use flanges that are worn down in diameter or of uneven diameter. Tighten flanges securely with the special clamping nut and wrench provided. Rotate the blade by hand to be certain that it does not come in contact with the blade guard.
- To mount cutting blade, release the blade guard latch and rotate the blade guard until the blade flanges are accessible. Inspect the blade and hole and assure that it fits snugly over the shaft bushing. Install the outer flange nut and tighten securely with provided wrench. Do not over tighten as to deform the blade flanges. Lower the blade guard and re-latch.
- Frequent cleaning and care will allow the saw to run cooler and provide longer service. The saw is most effectively cleaned with dry compressed air. Do not use a high-pressure washer around the blade shaft bearing seals, switch assembly or electric motor components.

### 3. Check Before Starting



**Take into account the working conditions from the health and safety point of view**

- Fuel: Check the engine maintenance manual.
- ❖ Gas Models: Unleaded gasoline is recommended



**WARNING!! Engine is shipped without oil.**

- Check that the engine oil level is correct. Because the engine often operates at an angle, check the oil level (with engine horizontally) frequently to ensure that the oil level never falls below the lower mark on the dipstick. 10W30 oil is recommended.

### 4. To Start The Saw



**Always pay extreme care and attention to the preparation of the machine before starting.**



**Remove all wrenches and tools from the floor and the machine.**



**Always keep the blade guard in place.**

#### On Gasoline Models:

- Start the engine by following the procedure in the engine manual.
- Let the engine warm up at half throttle.
- Open the engine throttle to full open before sawing. All sawing is done at full throttle.



**DO NOT change the governor setting - it is factory set for the correct speed.**

### 5. Operating Instructions

- Extend handle to desired height, secure with knob. Lower front pointer.

- With depth control knob by rotated at rest position. Confirm that the blade is clear of the surface. Start the engine.
- Align the saw with the cutting line using the front and rear pointers as references.
- The blade on this saw may be lowered in the concrete by rotating the depth control lever forward and allowing the weight of the saw to assist in the lowering of the blade. **DO NOT** push the handle forward. The blade is held at the desired depth by tightening the adjustment lever knob when blade has reached the desired depth. The saw can now be raised from the cut and will return to the previous preset depth.
- Rotate forward the lever and the blade will plunge to the preset depth. The depth can be preset to any depth between 0 and 2 1/2 inches for 8-inch blade and 0 to 3 1/2 inches for 10-inch blade by adjusting the lever knob. Loosen the adjustment lever knob and slide lever up or down to achieve the desire depth. Push the saw with even steady pressure. Maintain proper cutting speed by listening to the engine. Should the blade slow or stall, reduce forward pressure and allow the blade shaft speed to recover.

### 6. Application Guide

#### A. INTRODUCTION:

- The MG-8 / 10 saw has been specifically designed to cut expansion joint in concrete. It is designed with the following features:
  - A. Portable
  - B. Compact
  - C. Variable Depth Control
  - D. Dust Deflection
  - E. Stable Cutting Platform
- These features have been incorporated to aid in achieving straight and acceptable cuts in green concrete. However, just as finish troweling is an art to achieve the desired texture, so is cutting green concrete an art to achieve straight and spall free joint.

#### B. READING THE CONCRETE:

- After the concrete has been final troweled, the joints should be cut as soon as possible.



- Many factors effect the time of cutting as with troweling. They are water content of the mix, SPI rating of the mix, size of the aggregate, type of surface finish desired, i.e., broomed, hand troweled, power troweled, and super finish. Ambient air temperature, humidity, direct sunlight and many other atmospheric conditions can affect the curing rate as well. Therefore, no hard and fast rules can be established to assure optimum cut quality and speed. Only experience.
- It has been found that sealing the concrete can aid in improving the cut as well as speed cleans up. It is suggested that if the job specification calls for sealing, the sealant should be applied prior to cutting. This may delay the cutting while the sealant is curing. However, it will prove easier clean up. Here again, conditions on specific jobs may change this approach, but in general, it is recommended to apply the sealant first.
- Next, chalk a line. Align the front and rear pointer on the chalk line and cut with steady even pressure, not stalling the engine during the cut. Cut only as deep as the job specification requires! Set the depth stop so as to maintain the required depth of cut. This can be between 1/2" & 2.50" (MG-8), 3.50" (MG-10) (1.2 & 6.5, 8.89 cm). Remember deeper cuts mean slower cutting rate and additional blade wear and cost.
- Many job specifications now allow shallow cuts for crack control when cut within a few hours of the pour. A certain amount of random cracking may be controlled during the initial curing process, but there is no scientific data to ascertain effectiveness of the crack control. Job specifications, requiring early cutting within a few hours of the pour are being based on contractor input. If this is not verified in your region and not consistent with field condition, it is strongly suggested that the contractor request deviation to the specification. The first 60 days are critical as well as the first thermo cycle (weather related temperature changes). The TARGET MG-8/10 has sufficient power and head weight to maintain a constant depth up to 3.50" (88.9mm). This can assure random crack control within the long established guideline of D/4 in a slab up to 14" (35.56cm) thick. Unless otherwise specified, the D/4 principal should be followed and cutting the full D/4 with the MICROCON, it is not necessary to re-cut the joint the next day.

**C. IF UNACCEPTABLE SPALLING OCCURS, THERE ARE SEVERAL ITEMS TO INVESTIGATE:**

- Assure that front and rear wheels will rotate freely.
- Check the blade for wear. If you are using a blade with a continuous castellated rim, be sure the segment has not worn down to the core. With

segmented blades, it has been found that spalling is more likely and greater care must be taken.

- Check the condition of the slab. Cutting too early may induce spalling and raveling. If this condition occurs, the only option is to wait until the slab is stronger.
- Understanding the finishing process of concrete can also help in identifying problem areas. After the concrete is first poured, vibrating, spading, screeding, or power screeding is necessary. The object is to move the heavy aggregate to the bottom and bring the sand and cement to the surface. If large aggregate is left on the surface, cutting the concrete in the early green condition may not be possible. There must be sufficient surface strength to bond and hold any surface aggregate in place during cutting. If spalling is experienced, check to verify if the spalling is due to large surface aggregate. If this is experienced, you must wait and cut later or the next day since there is not a practical way to correct for surface aggregate.

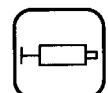
**7. Maintenance**



**Before performing any maintenance, ALWAYS park the machine on a level surface with the Engine or Motor OFF and the switch in the OFF position. Let the machine cool down!!**

After each use: **CLEAN the machine.**

**LUBRICATION:**



**ENGINE OIL:** Check daily. Change engine oil and oil filter after every 50 hours of operation. 10W30 MS, SD, SE or better is generally recommended.

**AIR FINS:** Clean every 50 hours of operation.

**8. Important Advise**

- Tighten loose nuts and bolts regularly, particularly after several hours of operation.
- Check V-Belt tension regularly. Re-tighten V-Belt as necessary.
- Remove the blade for storage. Store it carefully.

## **9. Repairs**

We carry out all repairs in the shortest possible time and at the most economical prices. (See front page for our address and phone numbers)

## **10. Spare Parts**

For quick supply of spare parts and to avoid any lost time, it is essential to quote the data on the manufacturer's plate affixed to the machine and the part number(s) to be replaced with every order.

*The instructions for use and spare parts found in this document are for information only and are not binding. As part of our product quality improvement policy, we reserve the right to make any and all technical modifications without prior notice.*



**The manufacturer accepts no responsibility caused by unsuitable use or modifications.**



## SYMBOL DEFINITIONS DEFINICIÓN DE SIMBOLOS

---



- Please read the instructions for use prior to operating the machine for the first time.
- Antes de la puesta en marcha, lea detenidamente las instrucciones y familiarícese con la máquina.



- Mandatory
- Obligatorio



- Indication
- Indicación



- Prohibition
- Prohibición



- Warning Triangle
- Triángulo De Advertencia



- Wear Eye Protection
- Usar Gafas De Protección



- Wear Breathing Protection
- Usar Máscara De Protección



- The Use Of Ear Protection Is Mandatory
- Es Obligatorio El Uso De Protección Auditiva



- Wear a Hard Hat
- Usar Casco Duro



- Wear Safety Shoes
- Usar Zapatos De Seguridad



- Wear Appropriate Clothing
- Usar Ropa Adecuada



- Motor Off
- Parar El Motor



- Use In Well Ventilated Area
- Usar En Una Área Bien Ventilada



- Do Not Use In Flammable Areas
- No Usar In Áreas Inflamables



- Machinery Hazard, Keep Hands And Feet Clear.
- Máquina Peligrosa - Mantenga Manos Y Pies Alejados De La Máquina



- Danger, Poison Exhaust Gas
- Peligro, Gases De Escape Tóxicos



- No Non-working Personnel In Area
- Prohibido Para Personas Ajenas A La Obra



- No Smoking
- No Fumar



- Do Not Operate Without All Guards In Place
- No Operar Sin Todas Las Protecciones In Su Sitio



- Always Keep the Blade Guards In Place
- Mantenga Siempre Las Protecciones De La Hoja En Su Sitio



- Keep Work Area Clean/Well Lit, Remove All Safety Hazards
- Mantenga Limpio El Sitio De Trabajo/Bien Iluminado, Elimine Todos Los Riesgos De Seguridad



- Dangerously High Noise Level
- Nivel De Ruido Elevadamente Peligroso



- Pay Extreme Attention To The Care And Protection Of The Machine Before Starting Up
- Ponga Extrema Atención Al Cuidado Y Preparación De La Máquina Antes De Ponerla En Marcha



- Remove Tools From Area and Machine
- Elimine Las Herramientas Del Área Y De La Máquina



- Oil Pressure
- Presión De Aceite



- Oil Required
- Necesita Aceite



- Dipstick, Maintain Proper Oil Level
- Varilla De Control, Mantenga El Nivel De Aceite Correcto



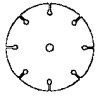
- Lubrication Point
- Punto De Lubrication



- Unleaded Fuel Only
- Solamente Combustible Sin Plomo



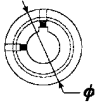
- Repairs Are To Be Done By An Authorized Dealer Only
- Las Reparaciones Deben Ser Efectuadas Únicamente Por Un Distribuidor Autorizado



- Diamond Blade
- Sierra Diamantada



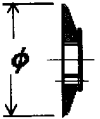
- Blade Diameter
- Diámetro De La Hoja



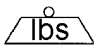
- Pulley Diameter
- Diámetro De La Correa



- Number of Revolutions Per Minute, Rotational Speed
- N° De Revoluciones Por Minuto, Velocidad De Rotación



- Blade Flange Diameter
- Diámetro De La Brida De La Hoja



- Machine Mass (lb.)
- Masa De La Máquina (lb.)



- Electric Motor
- Motor eléctrico



- Engine
- Motor



- Engine Speed Revolutions/Minute
- Velocidad Del Motor En Revoluciones Por Minuto (RPM)



- Engine Start
- Arranque Del Motor

## WARNING

### HEARING HAZARD

DURING NORMAL USE OF THIS MACHINE, OPERATOR MAY BE EXPOSED TO A NOISE LEVEL EQUAL OR SUPERIOR TO **85 dB (A)**

## ATENCIÓN

### RIESGO DE DAÑO AUDITIVO

EN CONDICIONES NORMALES DE UTILIZACIÓN, EL OPERADOR DE ESTA MÁQUINA PUEDE ESTAR EXPUESTO A UN NIVEL DE RUIDO IGUAL O SUPERIOR A **85 dB (A)**

**DECAL DESCRIPTION AND LOCATIONS  
DESCRIPCIÓN DE CALCAMONIAS Y UBICACIONES**

**TARGET  
MG 8**

P/N: 542195702  
Location: Blade Guard

**TARGET**  
TARGETBLUE.COM

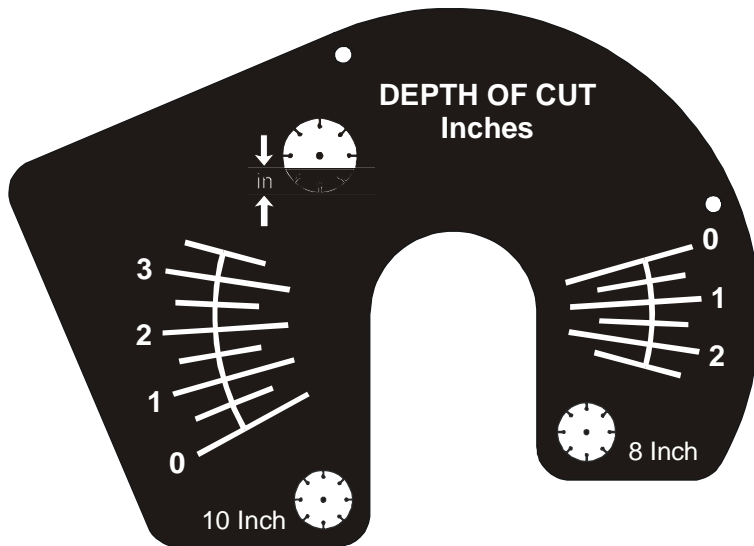
P/N: 187691  
Location: Rear of Frame

**TARGET  
MG 10**

P/N: 542195633  
Location: Blade Guard

**TARGET®**

P/N: 187732  
Location: Front Face of Frame  
And Left Hand Side of Frame



P/N: 542195701  
Location: RH Side of Frame



P/N: 177588  
Warning Decal  
Location: Top of Frame

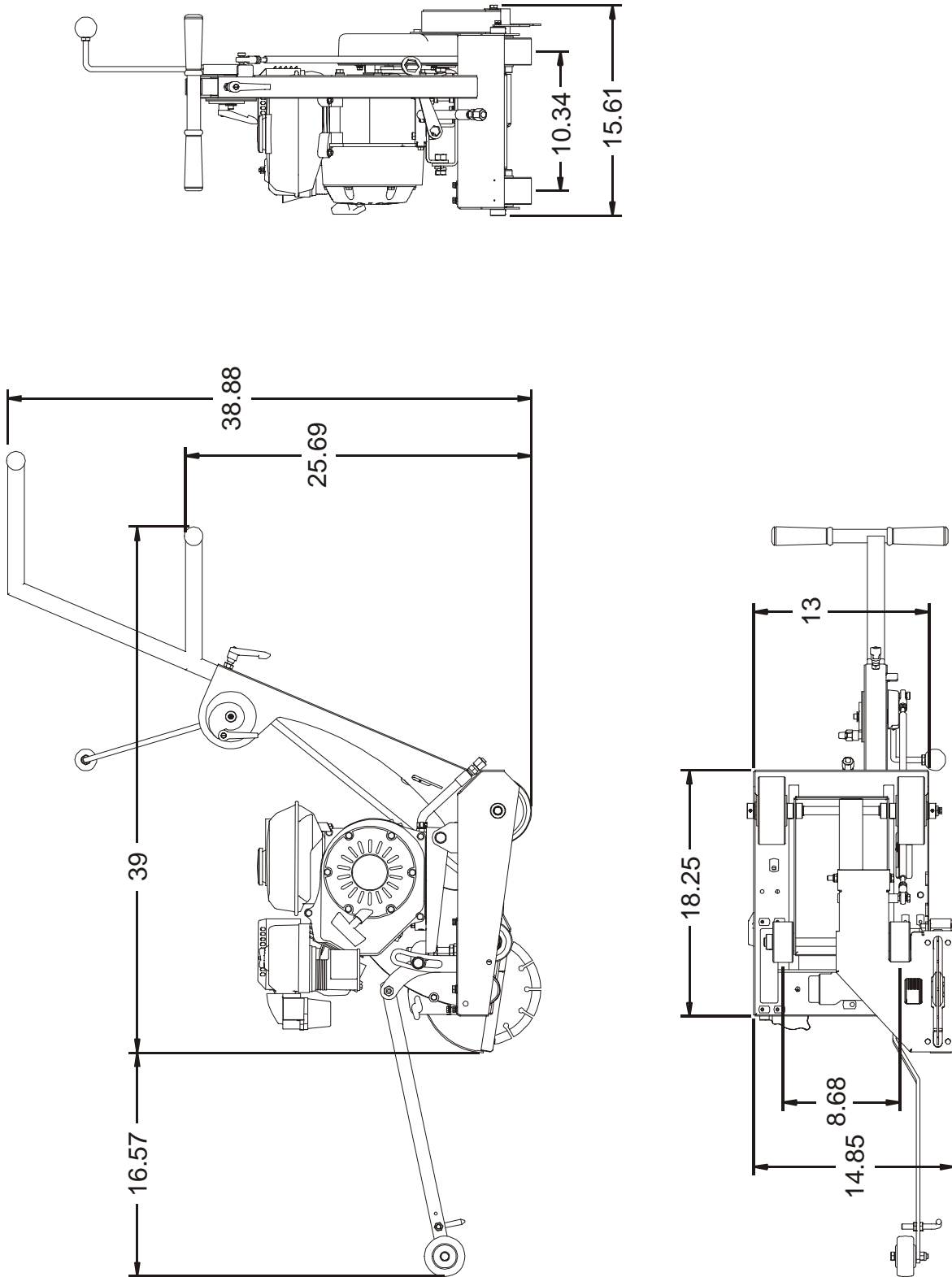


P/N: 169065  
Muffler Warning Decal  
Location: Engine Fuel Tank

## GASOLINE POWERED MODEL SPECIFICATIONS

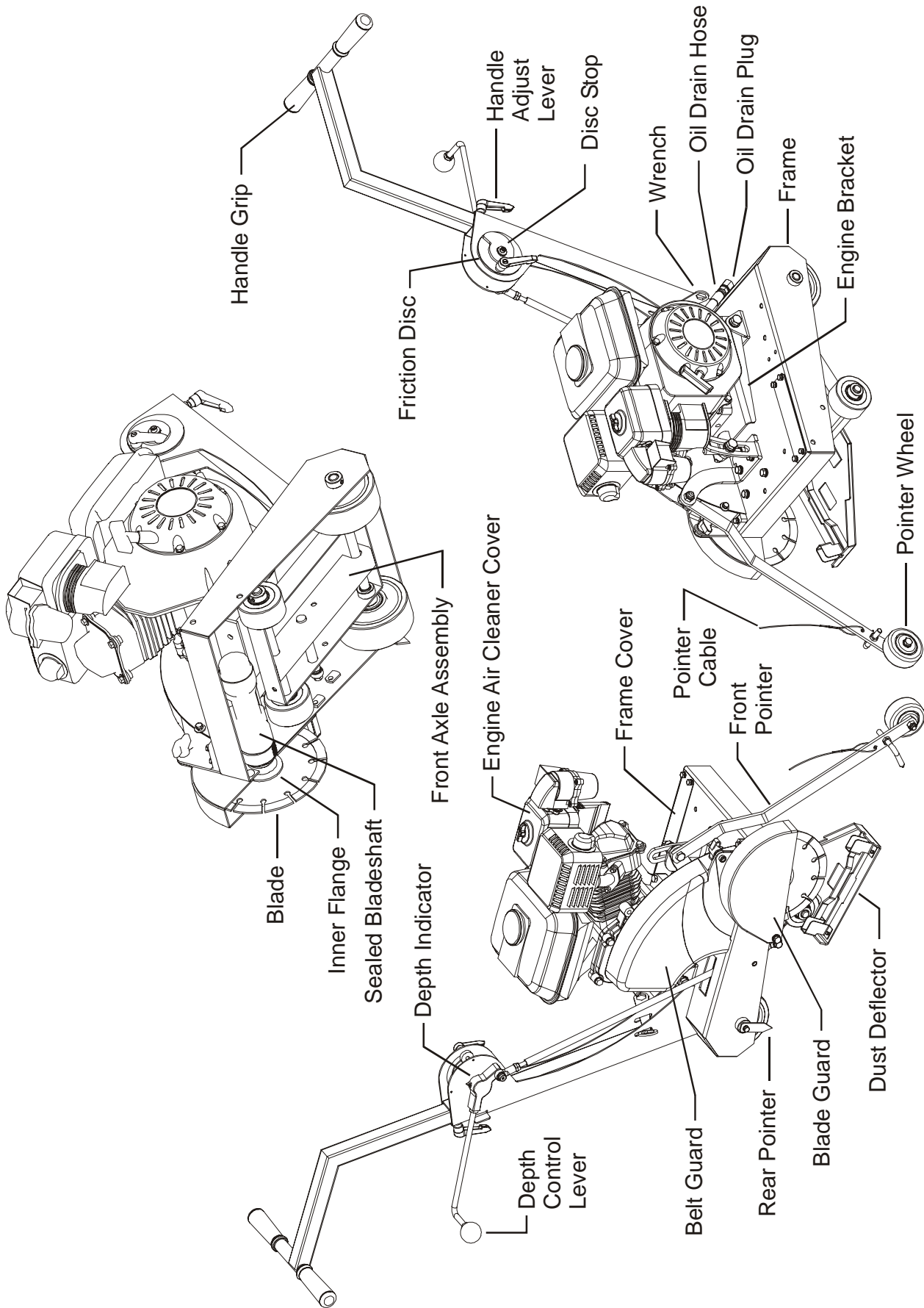
Model	MG 8 4H	MG 8 6.5H	MG 10 4H	MG 10 6.5H
Item No.	953300117	95330018	953300115	953300116
Engine	Honda	Honda	Honda	Honda
Horsepower (kw)	4.0 (2.98)	6.5 (4.85)	4.0 (2.98)	6.5 (4.85)
RPM	3600	3600	3600	3600
Displacement	7.3 cu. In. (118 cc)	12 cu. In. (196 cc)	7.3 cu. In. (118 cc)	12 cu. In. (196 cc)
Bore	2.4 in. (60 mm)	2.9 in. (73 mm)	2.4 in. (60 mm)	2.9 in. (73 mm)
Stroke	1.7 in. (42 mm)	2.1 in. (58 mm)	1.7 in. (42 mm)	2.1 in. (58 mm)
Cylinder/Cycle	1/4			
Fuel Capacity	0.66 Gallon (2.5 Liter)	0.95 Gallon (3.6 Liter)	0.66 Gallon (2.5 Liter)	0.95 Gallon (3.6 Liter)
Oil Capacity	0.59 Quart (0.56 Liter)	0.63 Quart (0.60 Liter)	0.59 Quart (0.56 Liter)	0.63 Quart (0.60 Liter)
Air Filter	Dry type, dual element with pre-cleaner			
Starter	Recoil			
Cooling System	Forced Air			
<b>ALL SAWS FEATURE:</b>				
Blade Guard Capacity - In (mm)	8 (203)	8 (203)	10 (254)	10 (254)
Maximum Depth of Cut - In (mm)	2 1/2 (63.5)	3 1/2 (88.9)	2 1/2 (63.5)	3 1/2 (88.9)
Blade Arbor Size	5/8 Inch (15.8mm)			
Blade Flange	2.5 Inch (63.5mm) Diameter			
Blade Drive	(1) Poly V Belt			
Blade Control	Rotating lever with lock down knob			
Axle Front	5/8 Inch (15.8mm) Diameter; raise & lower cutting head			
Wheels Front In (mm)	3 x 1-1/2 x 5/8 (76.2 x 38.1 x 15.8) Durometer Poly Aluminum Hub Sealed Ball Bearing			
Wheels Rear In (mm)	5 x 2 x 5/8 (127 x 50.8 x 15.8) Durometer Poly Aluminum Hub Sealed Ball Bearing			
Chassis	One piece reinforced box base			

# MG-8/10 DIMENSIONS





# PARTS IDENTIFICATION





**Reference Information:**

**Model No.:** \_\_\_\_\_

**Serial No.:** \_\_\_\_\_

**Date Purchased:** \_\_\_\_\_

**NOTES:**

---



---



---



---



---



---



---



---



---



---



---



---



---



---



---



---



---



---



---



---



---



---



---

**Target Corporate Office**

17400 West 119th Street  
Olathe, Kansas 66061  
Phone: 913-928-1000

Customer Service: 800-288-5040  
Customer Service Fax: 800-825-0028  
Corporate Office Fax: 913-438-7951  
Customer Service, Int'l: 913-928-1258  
Cerritos, CA Warehouse: 562-404-6172  
Cerritos, CA Warehouse Fax: 562-404-0953

**Target Latin America, Mexico, Caribbean,  
Central and South America**

17400 West 119th Street  
Olathe, Kansas 66061  
Phone: 913-928-1255  
Fax: 913-438-7938

**Target Canada**

Phone: 800-323-3553  
Fax: 888-323-3822

**Warning!**



*Some dust created by powered sanding, sawing, grinding, drilling and other construction activities contains chemicals known (to the State of California) to cause cancer, birth defects or other reproductive harm.*

*Some examples of these chemicals are:*

- *Lead from lead based paints.*
- *Crystalline silica from bricks and cement and other masonry products.*
- *Arsenic and chromium from chemically-treated lumber.*

*Your risk from these exposures varies, depending on how often you do this type of work. To reduce your exposure to these chemicals, work in a well-ventilated area, and work with approved safety equipment such as those dust masks that are specially designed to filter out microscopic particulates.*

**TARGET®**

**[www.targetblue.com](http://www.targetblue.com)**



**From the Electrolux Group. The world's No. 1 choice.**