

Revised 12/2009

TRENCH **MASTER**[®]

Owners - Operators Manual

FEATURED MODEL #'s

REDEFINER

R450H

R450HA

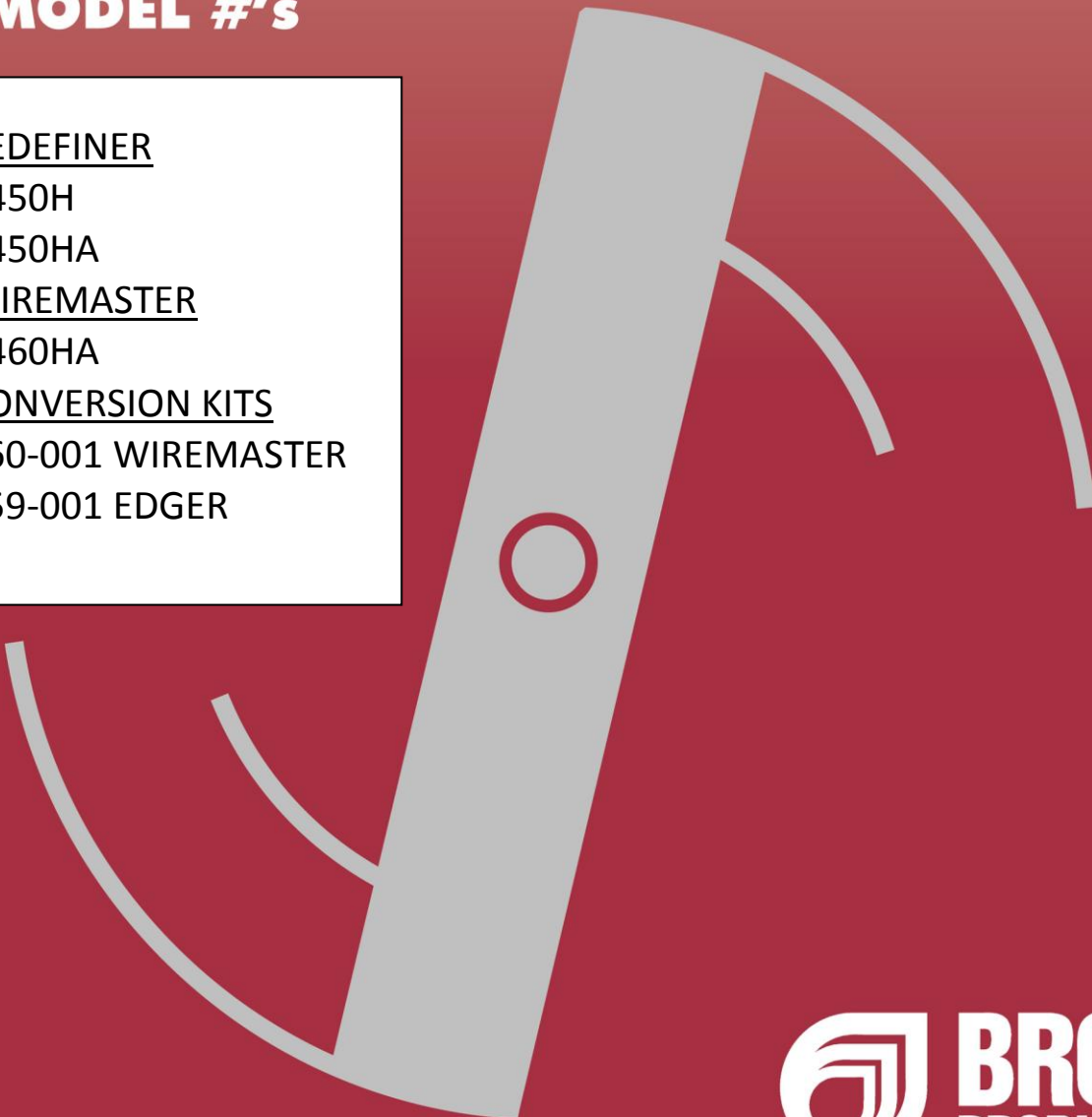
WIREMASTER

R460HA

CONVERSION KITS

460-001 WIREMASTER

459-001 EDGER



 **BROWN**
PRODUCTS, INC.[™]



ReDefiner/WireMaster Mole/ReDefiner Edger Kit Manual

INTRODUCTION

You are now the owner of a Brown TRENCHMASTER®. The term TRENCHMASTER® is used throughout this manual to include the following products: R450H, HA ReDefiner, R460HA WireMaster “Mole” and the ReDefiner Edger Kit. The TRENCHMASTERS® are very versatile trenchers which, when properly equipped, will trench in almost any soil condition. The TRENCHMASTER® is an inexpensive alternative to the much heavier, more bulky and less maneuverable trenchers on the market.

This TRENCHMASTER® is manufactured by Brown Products, Inc. which has been developing and producing quality farm equipment, right-of-way maintenance equipment, and outdoor power equipment since 1943. Brown Products is proud of the reputation it has earned for quality products and customer service.

If you have any questions or problems with your TRENCHMASTER®, please contact your dealer or distributor. If they cannot answer your questions or solve your problem, feel free to call.



376 County Road 563 • Midland City, AL 36350
(800)897-3726 • Fax: (334) 983-1606
<http://www.brownproducts.com>

TABLE OF CONTENTS

Warranty.....	3
Supplemental Warranty.....	4
Owner Registration.....	6
Safety.....	9
Operating Instructions.....	11
Scheduled Maintenance.....	13
Troubleshooting.....	14
Parts Lists & Drawings:	
• ReDefiner.....	15
• WireMaster Mole Kit & Edger Kit.....	17
• WireMaster Mole.....	19
Installation & Operation Instructions:	
• WireMaster Mole Kit.....	21
• ReDefiner Edger Kit.....	22

WARRANTY STATEMENT

STATEMENT OF POLICY

In accordance with our established policy of constant improvement, we reserve the right to amend these specifications at any time without notice.

ENGINE WARRANTY

Warranty of all engines and engine parts is the sole responsibility of the particular engine manufacturer. See engine warranty in the engine manual. Engine problems must be checked and approved for warranty by an authorized engine manufacturer's service center. Brown Products, Inc. is not an authorized service center for any engine manufacturer and accepts no responsibility for engine warranties, either express or implied.

WARRANTY BY MANUFACTURER

Dealer/distributor understands and agrees that the manufacturer extends only the following warranty to its customers. In the event dealer/distributor extends any additional warranty such as enlarging the scope or period of warranty or undertaking a warranty of fitness for any particular purpose or obligation not encompassed in manufacturer's warranty, dealer/distributor shall be solely responsible therefore and shall have no recourse against manufacturer with respect thereto.

WARRANTY

LIMITED WARRANTY

Brown Products, Inc. hereby warrants that Brown's TRENCHMASTER® products will be free from defects in material and workmanship under normal use according to the provisions and limitations herein set forth. All parts, specifically EXCLUDING expendable "wear" parts, that become unserviceable within one year (12 months) from date of purchase, shall be repaired or replaced at Brown's option – at no cost to purchaser.

LIMITATIONS

The obligation of Brown for breach of warrant shall be limited to products manufactured by Brown (1) that are installed, operated and maintained according to Brown's instruction furnished and/or available to the purchaser upon request, (2) that are installed according to all other applicable Federal, State and local codes or regulations, and (3) that the purchaser substantiates were defective in material and workmanship notwithstanding that they were properly installed and correctly maintained as set forth and were not abused or misused. The obligation of Brown shall be limited to replacing or repairing the defective product, at the option of Brown. Brown shall not be responsible for any labor or cost of removal or re-installment of its products and shall not be liable for transportation costs to and from its plant in Midland City, Alabama. Use of parts for modification or repair of TRENCHMASTERS® or any component part thereof not authorized or manufactured by Brown specifically for the TRENCHMASTERS® shall void this warranty. This warranty shall not apply to any damage to or defect in TRENCHMASTERS® that is directly or indirectly caused by (1) FORCE MAJEURE, Act of God or other accident not related to an inherent product defect, of (2) abuse, misuse or neglect of the TRENCHMASTER®, including any damage caused by improper assembly, installation, service maintenance or faulty instruction of the purchaser. Other than as expressly set forth hereinabove, Brown makes no other warranty, express or implied, with respect to the TRENCHMASTER®, including but not limited to any warranty of merchantability or fitness for a particular purpose. And in no event shall Brown be responsible for any incidental or consequential damages of any nature suffered by purchaser or any other person or entity caused in whole or in part by the TRENCHMASTER®. Any person or entity to whom this warranty extends and who claims breach of warranty against Brown must bring suit thereon within one year from the date of occurrence of such breach of warranty or be forever barred from any and all legal or other remedies for such breach of warranty. Brown is not responsible for and hereby disclaims any undertaking, representation or warranty made by any dealer, distributor or other person that is inconsistent with or in any way more expansive than the provisions of this limited warranty. This warranty grants specific legal rights and shall be read in conformity with applicable state law. In some jurisdictions, the applicable law mandates warranty provisions that provide greater rights than those provided for herein. In such case, this limited warranty shall be read to include such mandated provisions; and any provision herein that is prohibited or unenforceable in any such jurisdiction shall, as to such jurisdiction, be ineffective to the extent of such prohibition or unenforceability without invalidating the remaining provisions and without affecting the validity or enforceability of such provisions in any other jurisdiction(s).

R450H & HA REDEFINER SUPPLEMENTAL WARRANTY STATEMENT

- The Brown R450H & HA ReDefiner is designed for the maintenance of existing beds only. It is not intended for new bed construction. **Use of the R450H & HA on new beds voids all warranties!**
- Operating the ReDefiner with an unbalanced rotor creates destructive vibrations and operations should cease immediately if this occurs. Determine what is causing the unbalanced issue and correct by removing debris buildup on the rotor or replace with a new balanced rotor. One missing rotor tooth will be cause for changing the rotor.
- **Use of any part not manufactured by Brown Products, Inc. will void all warranties. The use of a re-manufactured rotor will also void the warranty.**

This page intentionally left blank.

TrenchMaster® Owner's Warranty Card

Name _____ Model _____
Address _____ Serial Number _____
City/State _____ Date Purchased _____
Phone _____ TrenchMaster® Dealer _____
E-Mail _____

IMPORTANT: TO PLACE THE BROWN WARRANTY INTO EFFECT, THIS WARRANTY CARD MUST BE COMPLETED AND MAILED WITHIN 30 DAYS AFTER RECEIVING THIS EQUIPMENT.



For additional information and inquiries, please contact: _____



376 County Road 563 • Midland City, AL 36350
Phone: (800) 897-3726 • Fax: (334) 983-1606
<http://www.brownproducts.com>

This page intentionally left blank.

BROWN **MASTER SERIES** **NEW** **1 MACHINE ...** **... 3 APPLICATIONS!**



MODEL R450HA REDEFINER

- Redefines existing mulch beds at speeds up to 60 ft. per minute
- GX160 Honda engine (5.5 HP)
- Very maneuverable, for making tree rings & fancy designs.
- All models shown weigh less than 95 lbs.
- All speeds vary depending on blade depth and soil conditions



MODEL R460HA WIREMASTER

- Install invisible dog fence or low voltage wire, up to 25 ft. per min.
- Digs trench, lays wire and covers trench all in the same pass.
- WIREMASTER kit (Part#460-001) available to convert the R450H/HA REDEFINER to a R460 WIREMASTER



MODEL R450/460 W/EDGER CONVERSION KIT INSTALLED

- Edger conversion kit (Part # 459-001) available to convert the R450/460 units to a sidewalk edger
- Kits easily installed
- All machines sold with one year warranty (commercial and rental)



For More Information Call:



BROWN
PRODUCTS, INC

1.800.897.3726

376 C.R. 563 • MIDLAND CITY, AL 36350



WARNING

SAFETY PRECAUTIONS



WARNING: Engine exhaust from this product contains chemicals known, in certain quantities, to cause cancer, birth defects, or other reproductive harm.

DO NOT assemble TRENCHMASTER® before reading assembly instructions.

DO NOT start TRENCHMASTER® before reading operating instructions.

DO NOT modify TRENCHMASTER® in any way.

DO NOT operate without all shields in place.

DO NOT operate without eye protection. Goggles are provided with each TRENCHMASTER®.

DO NOT lift trencher off the ground until engine is switched off and rotor has stopped.

DO NOT drop the TRENCHMASTER® to the ground from truck tailgate or bed of trailer.

DO NOT operate unless safety area is clear of people, animals, vehicles, and glassed areas that may be damaged by possible projectiles. (See Soil & Debris Exhaust chart showing area of possible projectiles, pg 10.)

DO NOT begin operation until all underground pipes, electrical and communications lines and sprinkler lines have been located and marked. The utility companies will be glad to provide information on their facilities. A ruptured gas line or cut electrical cable may cause injury or death.

DO NOT place hands or feet near belts or rotor mechanisms while engine is running.

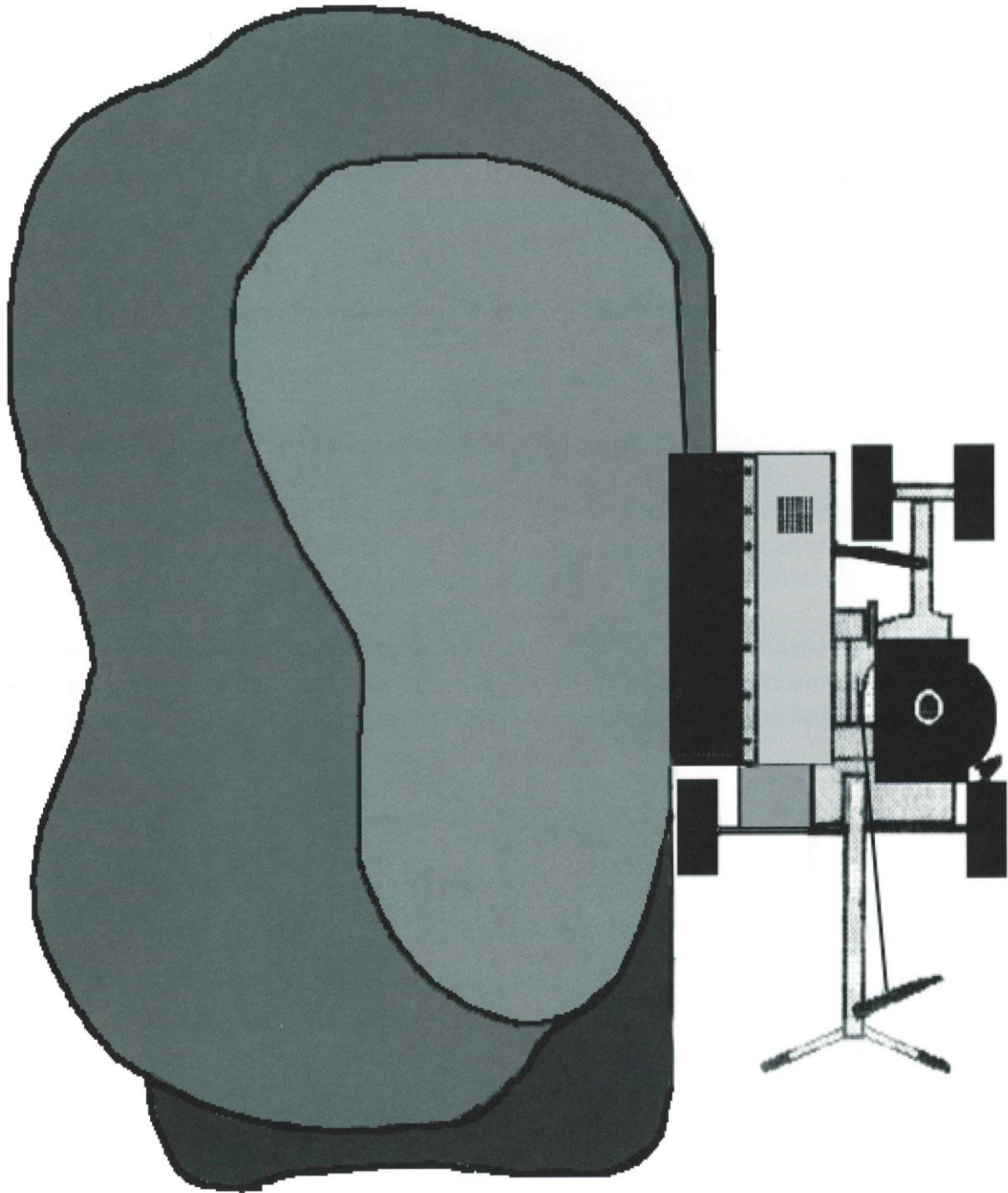
DO NOT operate TRENCHMASTER® without wearing proper shoes (high top leather shoes or boots are recommended).

DO NOT allow bystanders or spectators to be within 50 feet of TRENCHMASTER® while engine is running. (See Soil & Debris Exhaust chart showing areas of possible projectiles, pg 10.)

DO NOT operate TRENCHMASTER® until all surface obstructions have been cleared from area. All rocks and debris should be removed from area.

DO NOT disconnect oil alert on engines. To do so may void your engine warranty.

TRENCHMASTER®
SOIL & DEBRIS EXHAUST CHART



OPERATING INSTRUCTIONS

Brown TRENCHMASTER®

BEFORE STARTING ENGINE

1. Check machine.
 - a. Read and be familiar with equipment operating instructions.
 - b. Be sure you have the proper rotor for trench size and soil conditions.
 - c. Check rotor retaining nut for tightness.
 - d. Be sure belts and pulleys are properly aligned and adjusted.
 - e. Check hood mounting bolts and nuts for tightness.
 - f. Check set screws in pulleys and lock collars for tightness.
 - g. Check all other nuts and bolts for tightness.
 - h. Check Clutch Cable tension. Tension is adjusted using the turnbuckle so that the clutch spring stretches approximately $\frac{3}{4}$ " to 1" when clutch is engaged.

2. Check machine
-



CAUTION: NEW ENGINES SHIPPED WITH MACHINES ARE NOT SERVICED. ADD OIL TO CRANKCASE BEFORE STARTING.



WARNING: Gasoline is extremely flammable and highly explosive under certain conditions. Always stop the engine and do not refill tank while you are smoking or near open flame or sparks.



WARNING: Never start or run the engine while in an area where fumes may collect. Carbon Monoxide from the exhaust is an odorless and deadly gas which must have adequate space or ventilation to allow rapid dispersal.

- a. Be familiar with manufacturer's operating and safety instructions for engine.
 - b. Check oil level with dipstick and add if necessary. Do not overfill.
 - c. Check air filter and clean if necessary. Clean frequently if operating in dusty conditions.
 - d. Use only clean fuel. Unleaded fuel is recommended in all engines.
 - e. Be sure muffler and exhaust deflector are installed, are in proper position, and are in good operating condition. (Deflector should exhaust to the left, away from the air intake.)
3. Start engine
 - a. Be sure clutch lever is in disengaged position and no tension is on drive belts.
 - b. Turn ignition switch to "ON" position.
 - c. Turn fuel on.
 - d. Close choke if engine is cold.
 - e. Pull start cord rapidly.

Starting Engine Continued

- f. When engine starts, gradually open choke and let engine warm up at about ¼ speed.



WARNING: Do not operate machine without rotor hood installed and secure.



WARNING: Do not operate the machine within a 50' radius of people, animals, automobiles or glassed areas which might be damaged by projectiles.



WARNING: Operator must wear eye protection when operating the TRENCHMASTER®.



WARNING: Operator must locate and stay clear of all underground gas, electric, water and communications lines before starting trenching operation.

CALIFORNIA PROPOSITION 65 WARNING: Engine exhaust from this product contains chemicals known to the State of California to cause cancer, birth defects, or other reproductive harm.

4. Operations

- a. **To start trenching, set throttle full open.** Before engaging the clutch lever, the handle must be pushed toward the ground enough to allow the rotor to turn without hitting the ground. Engage clutch and when rotor attains operating speed, the handle should be raised slowly so that the rotor engages the ground and gradually digs to trench depth.
- b. When trench depth is achieved, the operator should **pull the machine to the rear** at such a speed that the trencher will dig without overloading the engine.



WARNING: Starting the trench is the most critical time for dangerous flying projectiles. Be especially cautious by policing the area for rocks or other possible projectiles and ensure the area is completely clear of people, animals, vehicles, etc. that may be damaged by projectiles.

-
- c. When trenching, **if trencher strikes an underground object, stop immediately** to determine what the object is. Investigation should be done visually since touching an exposed electric wire could be fatal.
 - d. When trencher strikes a rock, either the trench or rock should be moved.
 - e. When digging in extremely hard clay or other difficult soils, it may sometimes be necessary to use an oscillating action by applying and releasing pressure on handlebar, front to rear, alternately.

SCHEDULED MAINTENANCE

Good maintenance practices are critical if you are to enjoy trouble free operation and long life from your Brown TRENCHMASTER®. Most required maintenance procedures are shown in this section. However, other common sense maintenance practices such as cleanliness and storage must be followed.

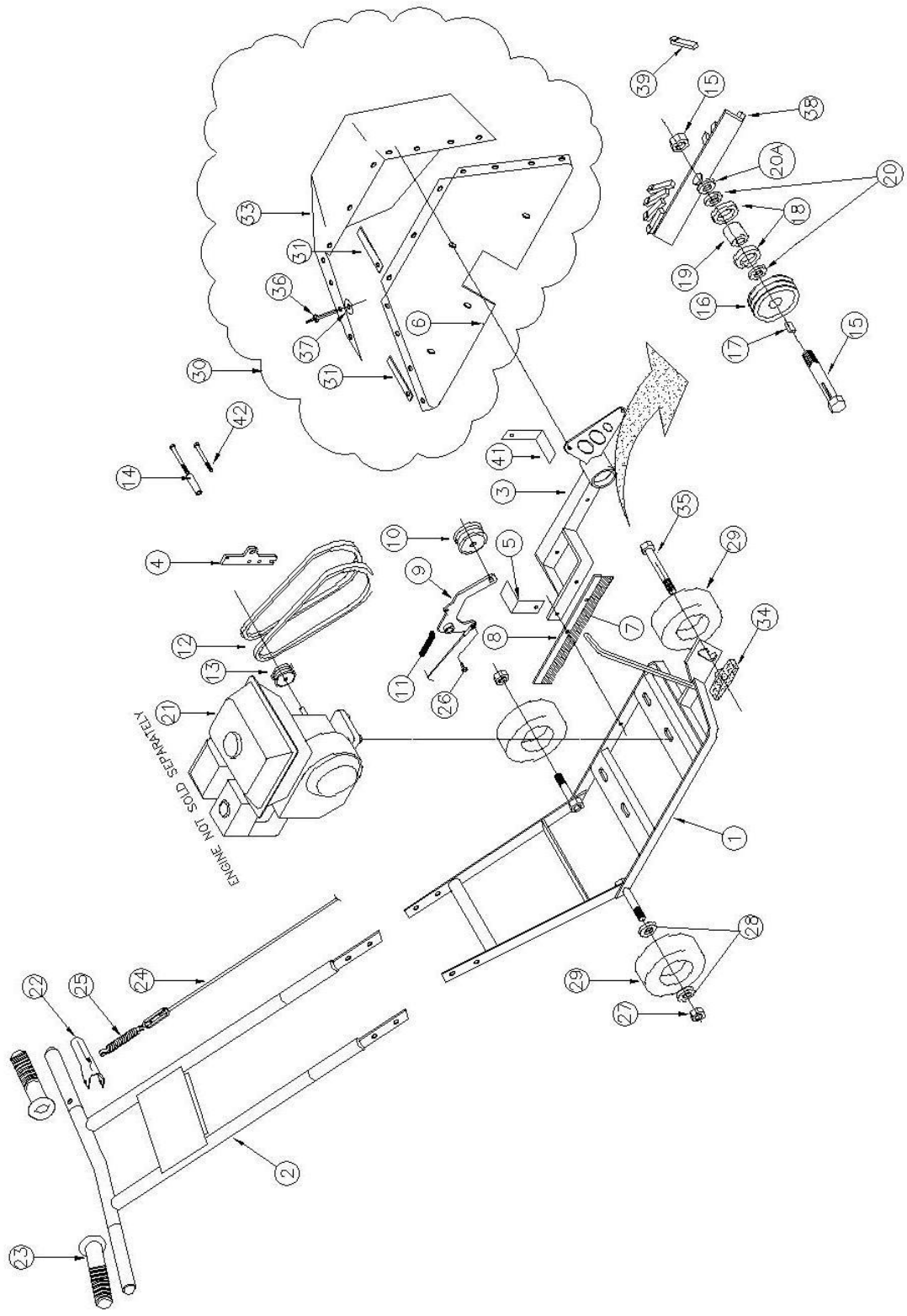
1. See Manufacturers operating and maintenance instructions for engine maintenance procedures.
2. Check all bolts and nuts for tightness before operation and periodically thereafter.
3. Check all set screws in belt pulleys and bearing lock collars before operation and periodically thereafter. If set screws are vibrating loose, Loctite's Threadlocker #242 should be applied to the threads and the set screw retightened.
4. Check drive belts for proper tension before operation. Adjust if necessary. Adjust belt tension using the turnbuckle to ensure the spring stretches approximately $\frac{3}{4}$ " to 1". Keep belt free of dirt and grease at all times.
5. Rotor points must be checked for wear before operation and periodically thereafter. Check at least every 200 feet initially. When working in difficult soil conditions, they should be checked more often. In good soil conditions, they may be checked less often but never less than each 500 feet of trenching.
6. Check rotor bearings for wear every 2000 feet. This is done by lifting the front of the machine off the ground so that the rotor may be turned by hand. Then grasp the end of the rotor firmly and try to move it from side to side. If there is more than $\frac{1}{4}$ " movement from side to side, the bearings must be replaced.
7. Check the idler pulley for wear before operation and replace if necessary.
8. Periodically check the idler arm for lateral movement. If the pivot bolt is badly worn, or the bolt is loose, the idler arm may have enough lateral movement to cause the belts to come off the pulley. The pivot belt should be tight enough to prevent lateral movement, but not so tight that it restricts free pivoting of the idler arm.

TROUBLESHOOTING

PROBLEM	POSSIBLE CAUSE	SOLUTION
Burning Belts	Improper tension on belts	Adjust belt tension using the turnbuckle on the clutch cable. Spring should stretch approximately $\frac{3}{4}$ " to 1" when clutch lever is fully engaged.
	Pulleys not aligned	Align pulleys
	Pulleys worn excessively	Replace pulleys
	Pulleys broken or burrs on pulley	Replace pulleys
	Wrong type belt	Replace with Kevlar belts
Excessive vibration	Rotor bearings worn excessively	Replace bearings
	Rotor points broken or missing	Replace points or rotor
	Rotor bent	Replace rotor
Rotor striking	Rotor too close to hood	Loosen eccentric lock collars on spindle and move rotor away from hood. CAUTION: Use thread lock on all set screws and tighten securely.
	Rotor bent	Replace rotor
Pulleys coming off shaft	Pulley set screw not tight	Remove set screws and apply thread lock to set screws, then tighten very firmly.

TrenchMaster Model R450H & R450HA ReDefiner Parts List

Ref #	Part #	Description	# Req'd
1	450-001	Frame	1
2	450-002	Handlebar	1
3	450-003	Assembly, Rotor Arm with Bearings & Spacer	1
4	450-251	Bracket, Idler Arm	1
5	450-024	Stop, Belt, Engine Pulley	1
6	450-253	Plate, Hood Back	1
7	450-752	Brush	1
8	450-503	Channel, Brush	1
9	991-05	Arm, Idler	1
10	12-22-2A	Pulley, Double Idler	1
11	991-06	Spring, Idler Arm Return	1
12	780-30	Belt, 31" Kevlar, Model R450H Only, 3.5" O.D. Pulley	2
12	450-767	Belt, 33" Kevlar, Model R450HA Only, 4.5" O.D. Pulley	2
13	701-02-2	Pulley, Engine	1
14	230-0002	Stop, Belt	1
15	450-502	Spindle, Rotor w/Nut	1
16	450-501	Pulley, Double Rotor, Model R450H Only, 3.5" O.D.	1
16	450-768	Pulley, Double Rotor, Model R450HA Only, 4.5" O.D.	1
17	450-758	Key, 3/16" x 3/16" x 3/4" Long, Rotor Pulley	1
18	450-751	Bearing, Rotor	2
19	450-004	Bearing, Spacer	1
20	450-765	Washer, 3/4" SAE Rotor Spindle (against each bearing)	2
20A	450-766	Flatwasher, 3/4" (against back of rotor)	1
21	Not Sold Separately	Engine, Honda GX160	1
22	450-259	Clutch Lever, Over Center	1
22	450-504	Lever, Clutch, Black	1
23	701-25	Grip, Handle	2
24	450-770	Cable, Clutch, For over Center Handle	1
24	450-754	Cable, Clutch w/Clevis & Turnbuckle, Black Lever	1
25	701-24A	Spring, Clutch	1
26	12-09	Pin, Sheave w/Cotter Pin	1
27	701-06A	Nut, 5/8" Nylon Lock	2
28	702-27B	Bearing, 5/8" Wheel (2 per wheel)	6
29	702-50C	Wheel, Pneumatic w/ 5/8" Bearing	3
30	450-007	Hood w/ Drape	1
31	450-005	Strap, Hood Drape Flap	1
33	450-753	Drape, Hood	1
34	450-755	Nut, Height Adjuster Wing - 5/8"	1
35	450-764	Bolt, Front Axle - 5/8" x 4"	1
36	450-756	Rivet, Hood Drape	10
37	450-757	Washer, Rivet Back-up	10
38	450-100	Rotor, 4" Redefining	1
39	450-507	Point, Rotor (2 1/4" straight)	N/A
40	450-762	Assembly, Front Axle (Bolt, Nuts, Washers & Wing Nut)	1
41	450-023	Stop, Belt, Rotor Pulley, Model R450H Only, 3.5" O.D.	1
41	450-025	Stop, Belt, Rotor Pulley, Model R450HA Only, 4.5" O.D.	1
42	450-763	Stop, Idler Arm, 5/16" x 3 1/2 " NF Bolt	1



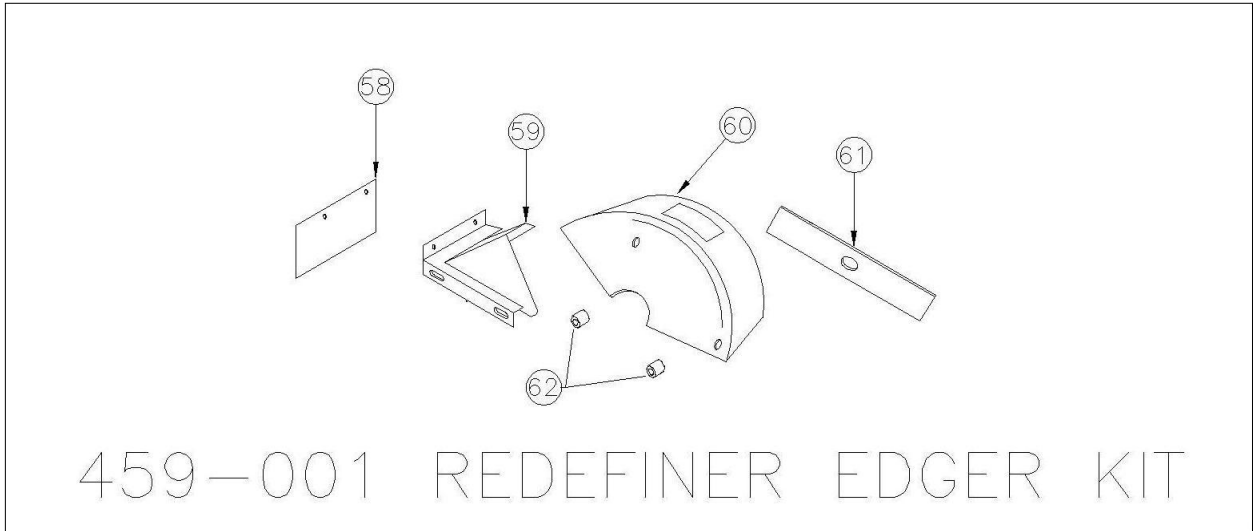
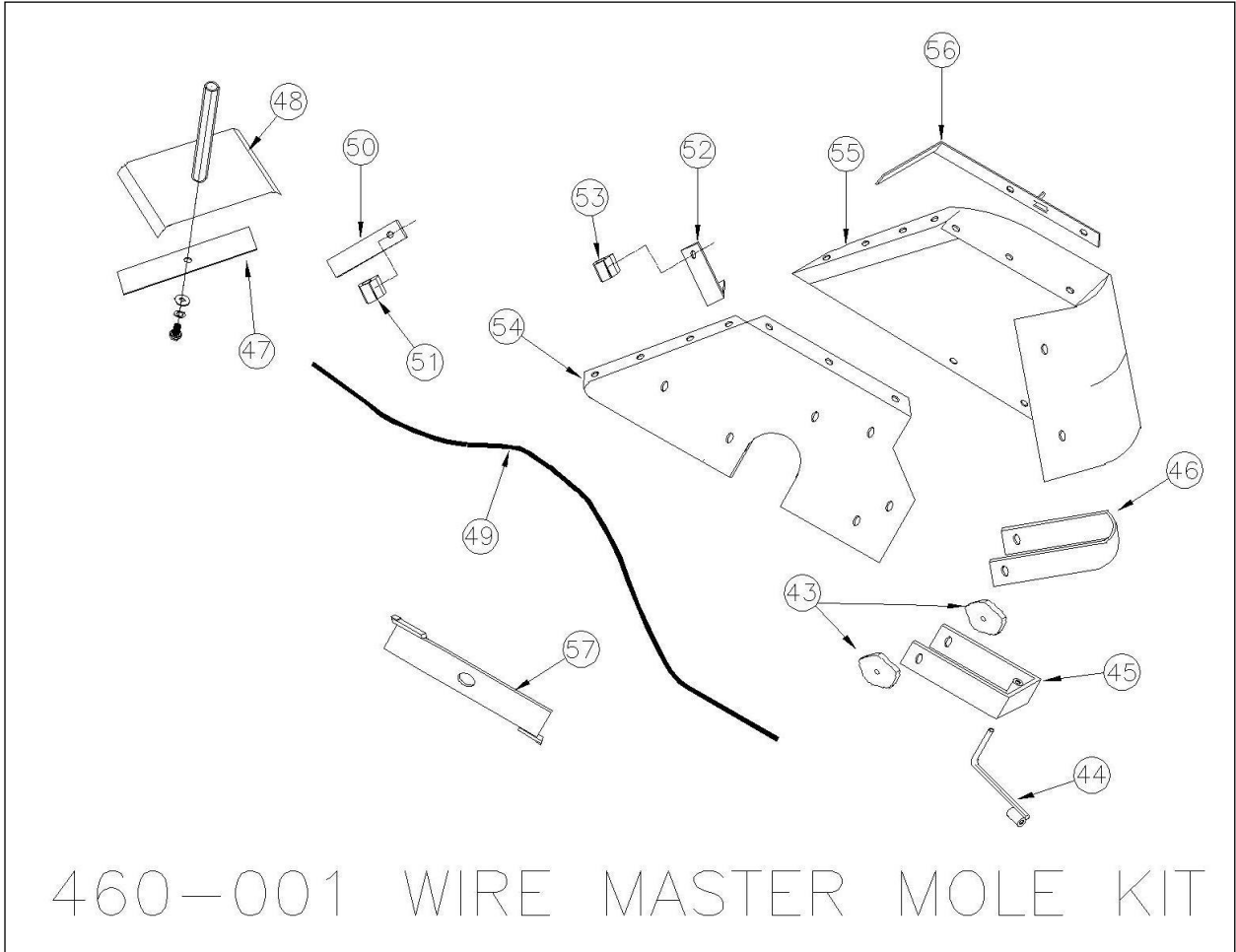
MODELS R450H & R450HA REDEFINER

**WireMaster Mole Kit 460-001
Parts List**

Ref #	Part #	Description	# Req'd
43	460-503	Knob, Up/Down Adjustment	
44	460-007	Rod, Ground	1
45	460-008	Bracket, Front, Up-Down	1
46	460-004	Bracket, Drape Retainer	1
47	460-010	Clamp, Wire Spool Bracket	1
48	460-013	Bracket, Wire Spool Mount	1
49	460-014	Tube, Wire Conduit, PEX	1
50	702-78	Strap	1
51	460-505	Clip, 10mm	1
52	460-009	Bracket, Pex, Tube	1
53	460-504	Clip, 12 mm	1
54	460-252	Hood, Back Plate	1
55	460-501	Drape, Hood	1
56	460-251	Brace, Outside	1
57	460-002	Rotor, WireMaster	1
54 & 55	460-015	Assembly, Hood with Drape	1

**ReDefiner Edger Kit 459-001
Parts List**

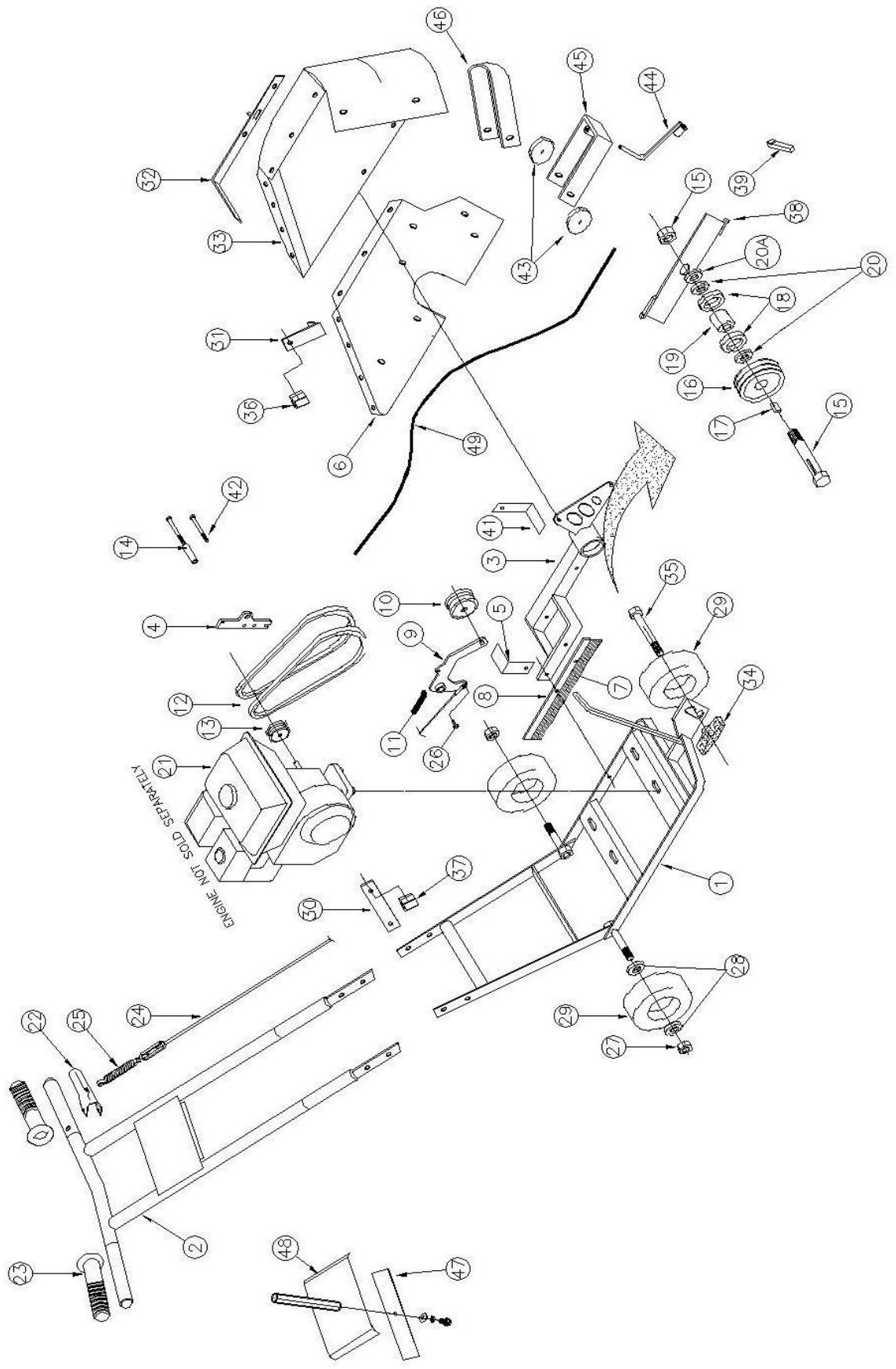
Ref #	Part #	Description	# Req'd
58	E-200-025	Flap, Rubber	1
59	459-004	Extension, Blade Guard	1
60	459-003	Guard, Blade	1
61	459-002	Blade, 10 inch	1
62	459-005	Spacer, Blade Guard	2



WireMaster Mole Model R460HA

Parts List

Ref #	Part #	Description	# Req'd
1	450-001	Frame	1
2	450-002	Handlebar	1
3	450-003	Assembly, Rotor Arm with Bearings & Spacer	1
4	450-251	Bracket, Idler Arm	1
5	450-024	Stop, Belt, Engine Pulley	1
6	460-252	Hood, Back Plate	1
7	450-752	Brush	1
8	450-503	Channel, Brush	1
9	991-05	Arm, Idler	1
10	12-22-2A	Pulley, Double Idler	1
11	991-06	Spring, Idler Arm Return	1
12	780-30	Belt, 31" Kevlar, Model R450H Only, 3.5" O.D. Pulley	2
12	450-767	Belt, 33" Kevlar, Model R450HA Only, 4.5" O.D. Pulley	2
13	701-02-2	Pulley, Engine	1
14	230-0002	Stop, Belt	1
15	450-502	Spindle, Rotor w/Nut	1
16	450-501	Pulley, Double Rotor, Model R450H Only, 3.5" O.D.	1
16	450-768	Pulley, Double Rotor, Model R450HA Only, 4.5" O.D.	1
17	450-758	Key, 3/16" x 3/16" x 3/4" Long, Rotor Pulley	1
18	450-751	Bearing, Rotor	2
19	450-004	Bearing, Spacer	1
20	450-765	Washer, 3/4" SAE Rotor Spindle (against each bearing)	2
20A	450-766	Flatwasher, 3/4" (against back of rotor)	1
21	Not Sold Separately	Engine, Honda GX160	1
22	450-259	Clutch Lever, Over Center	1
22	450-504	Lever, Clutch, Black	1
23	701-25	Grip, Handle	2
24	450-770	Cable, Clutch, For over Center Handle	1
24	450-754	Cable, Clutch w/Clevis & Turnbuckle, Black Lever	1
25	701-24A	Spring, Clutch	1
26	12-09	Pin, Sheave w/Cotter Pin	1
27	701-06A	Nut, 5/8" Nylon Lock	2
28	702-27B	Bearing, 5/8" Wheel (2 per wheel)	6
29	702-50C	Wheel, Pneumatic w/ 5/8" Bearing	3
30	702-78	Strap	1
31	460-009	Bracket, Pex, Tube	1
32	460-251	Brace, Outside	1
33	460-501	Drape, Hood	1
34	450-755	Nut, Height Adjuster Wing - 5/8"	1
35	450-764	Bolt, Front Axle - 5/8" x 4"	1
36	460-504	Clip, 12mm	1
37	460-505	Clip, 10mm	1
38	460-002	Rotor, WireMaster	1
39	450-507	Point, Rotor (2 1/4" straight)	N/A
40	450-762	Assembly, Front Axle (Bolt, Nuts, Washers & Wing Nut)	1
41	450-025	Stop, Belt, Rotor Pulley, Model R450HA Only, 4.5" O.D.	1
42	450-763	Stop, Idler Arm, 5/16" x 3 1/2 " NF Bolt	1
43	460-503	Knob, Up/Down Adjustment	2
44	460-007	Rod, Ground	1
45	460-008	Bracket, Front, Up/Down	1
46	460-004	Bracket, Drape Retainer	1
47	460-010	Clamp, Wire Spool Bracket	1
48	460-013	Bracket, Wire Spool Mount	1
49	460-014	Tube, Wire Conduit, PEX	1
54	460-252	Hood, Back Plate	1
6 & 33	460-015	Assembly, Hood with Drape	1



MODELS R460HA WIREMASTER MOLE

WireMaster Mole Kit Installation Instructions

1. Remove the ReDefiner Rotor (item # 38) from the rotor shaft.
2. Remove the entire ReDefiner hood assembly (item #30) from the bearing housing bracket and bearing housing arm. Set aside the Lower Belt Stop (item #41) for reinstallation.
3. Remove the Brush (item #8) from the bearing housing arm and set aside for reinstallation.
4. Install the WireMaster Mole hood assembly with PEX tubing to the bearing housing bracket and the bearing housing arm with the Brush (item #8) between the hood back plate and the bearing housing arm.
5. Install PEX tube bracket (item #'s 50 & 51) to the outside of the of the left handle bar tube in the top bolt with Clip (item #51) to the outside.
6. Thread the end of the PEX tube (item #49) through the Clip (item #51).
7. Attached the Wire Reel Holder (item #48) to the top side of the handlebar using the Clamp Bar (item #47) on the bottom side of the handlebar. The Wire Reel Holder should be up against the lower edge of the handlebar plate that has the ReDefiner decal and data plate attached.
8. Install the removed $\frac{3}{4}$ " hex nut (item #15) on rotor shaft and tighten to 40 ft.lbs and assure that the $\frac{3}{4}$ " SAE flat washer is between the nut and the bearing.
9. Install the WireMaster Mole Rotor (item #57) and tighten the outside $\frac{3}{4}$ " nut to 70 ft.lbs. Remember, the Rotor rotates counter-clockwise when facing it from the nut end of the rotor shaft. The carbide cutting tip should be on the top of the right end and the bottom of the left end.

WireMaster Mole Operating Instructions

1. Read and understand Operating Instructions on pages 11 & 12.
2. The front wheel of the WireMaster Mole controls the depth of the rotor. There are three depth positions (2", 3", 4") for the front wheel. In the bottom position is 2", the center position is 3", and the top position is 4". Set the front wheel to the desired wire depth.
3. Load Wire Spool Mount with spooled wire and thread wire through PEX tubing (item #49) until it protrudes about 6-8" out of the other end of the PEX tubing.
4. Drive a stake in ground about 12" from the starting point of the wire run.
5. Move the WireMaster Mole into position about 3-4" from the stake with the handlebar pointing in the direction of the wire run.
6. Loosen the two Up/Down Adjustment Knobs (item # 43) and slide the Front Up/Down Bracket forward and lower it and then slide back with the Bracket on top of the tab on the Outside Brace (item # 56) and tighten the Up/Down Adjustment Knobs (item #43) securely.
7. Secure the wire to the stake at ground level.
8. Crank the engine and run at full throttle.
9. Tilt the handlebar down until the rotor clears the ground and engage the rotor.
10. Slowly lower the rotor into the ground and start pulling the machine toward you until the front wheel is on the ground. Once the front wheel is on the ground the wire is now buried to the desired depth. Now continue to complete the wire run.
11. To make turns, merely lift up on the handlebar and slide the rear wheels to make the turn. That is, pivot the WireMaster Mole on the front wheel.

ReDefiner Edger Kit Installation Instructions

1. Remove the ReDefiner rotor (item # 38) from the rotor shaft
2. Remove the entire hood assembly (item #30) from the bearing housing and bearing housing arm. Keep the Lower Belt Stop (item #41) for reinstallation.
3. Remove the Brush (item # 8) from the bearing housing arm and keep for reinstallation.
4. Install the Extension, Blade Guard (item #59) loosely with the Brush (item #8) between the Blade Guard Extension and the bearing housing arm.
5. Bolt the Guard, Blade (item #60) to the bearing housing bracket with the Spacers (item #62) between the Blade Guard and the bearing housing bracket.
6. Reinstall the Lower Belt Guard on the back side of the bearing housing bracket so it is just above the lower pulley and tighten the two bolts. Note: The Blade Guard Extension should be inside the Blade Guard.
7. Slide the Blade Guard Extension back until it is snug against the inside of the Blade Guard and tighten the bolts. Assure that a flat washer is next to the slotted holes.
8. Install the removed $\frac{3}{4}$ " hex nut (item #15) on rotor shaft and tighten to 40 ft.lbs and assure that the $\frac{3}{4}$ " SAE flat washer is between the nut and the bearing.
9. Install the Edger Blade (item # 61) and $\frac{3}{4}$ " hex nut and tighten to 70 ft.lbs.
10. Crank engine and move to full throttle, tilt the unit back and engage the blade. Then release the clutch lever and assure the blade stops turning fairly promptly. If not, adjust the Lower Belt Stop and repeat until it is working properly.

If you have questions, call Rodney Blackmon or Ron Brown @ 800-897-3726.



BROWN PRODUCTS, INCTM

376 County Road 563 • Midland City, AL 36350 • (800) 897-3726 • Fax: (334) 983-1606
<http://www.brownproducts.com>