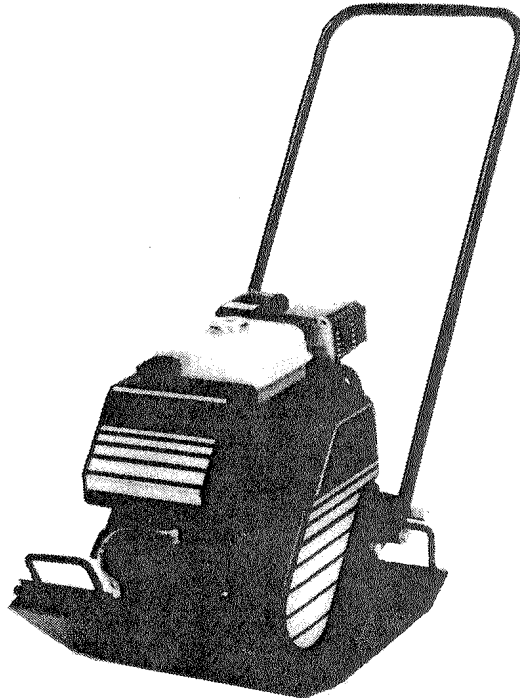




OWNER'S MANUAL

**MODELS: S28, S28 A, S38
S38A, S52, S52T**



STONE VIBRATORY PLATE

Stone Construction Equipment, Inc.
P.O. Box 150, Honeoye, New York, 14471

Phone: (800) 888-9926

Fax Numbers:

Honeoye, NY 716-229-2363

Pleasant Grove, UT 801-785-0249

Brunswick, GA 912-264-5758

A 100% employee-owned American manufacturer

© 1989 Stone Construction Equipment, Inc.

Revision: D 5/90

P/N 56049

SPECIFICATIONS

MODELS: S28, S28A, S38, S38A, S52, S52T

ENGINE: 4.6 HP Robin, 5 HP Honda, 5 HP Briggs & Stratton

MODEL	OPERATING WEIGHT	CIMA RATED IMPACT	FREQUENCY VPM	PLATE SIZE
S28	150 lb	3000 lb	5800	19"W X 24"L
S28A	160 lb	3000 lb	5800	19"W X 24"L
S38	180 lb	4000 lb	5400	20"W X 24"L
S38A	190 lb	4000 lb	5400	20"W X 24"L
S52	220 lb	5100 lb	5400	21"W X 24"L
S52T	170 lb	5100 lb	5400	14"W X 24"L

FUEL CAPACITY: 1 Gallon Approx.

OIL TYPE: SAE 30

IDLE SPEED: 1000 RPM Approx.

RUN SPEED: 3400 RPM

RECOMMENDED FUEL: Unleaded Gasoline 87 Octane or Higher
* Gasohol Blends Not Recommended

SPARK PLUG: Robin - NGK B6H5
Honda - NGK BPR 6ES
B & S - Champion RCJ8

SPARK PLUG GAP: Robin - .025 Inch
Honda - .030 Inch
B & S - .030 Inch

WATER TANK CAPACITY: 6 Quarts

ATTACHING OPTIONAL TRANSPORT WHEELS

1. Step on front lip of the compactor to tilt the machine forward, or lift on rear of machine on lifting handles to raise machine.
2. Slide transport wheel over base plate underneath forward shock mount on handle assembly. Make sure that wheel clip is flush against base plate.
3. Tighten "L" - Bolt down snug (Do Not Overtighten) by hand.

NOTE: On S52T a 1/2-13 bolt will have to be substituted for clearance.
4. Step off front of machine.
5. Tilt machine backwards until front of machine is clear of ground and machine is ready for transport.

MAINTENANCE

ENGINE - (All engines operate @3400 RPM).

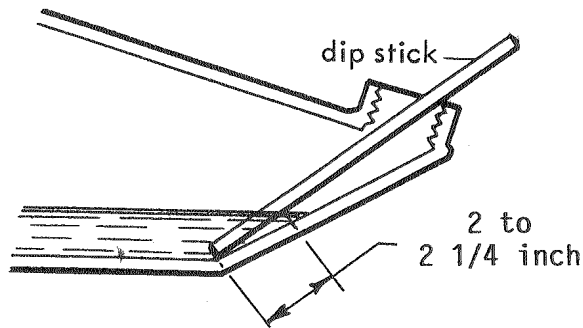
Daily - check engine oil level. Consult engine manual included with this unit for specific maintenance instructions.

Daily remove foam pre-cleaner from air filter. Wash the foam in liquid detergent and water. Squeeze dry between towels. Oil with one ounce of engine oil and squeeze to distribute oil evenly. Units equipped with Wisconsin Robin engines, use kerosene in place of oil and squeeze excess from foam.

Keeping filter clean - prolongs the engine life and decreases fuel consumption.

Thoroughly service engine at least annually. Follow manufacturer's recommendations including: clean carbon from cylinder head, check intake and exhaust valves, clean and adjust carburetor, check ignition cable and daily check for damaged parts and replace. Check for loose fasteners - tighten as per torque chart.

Monthly - check eccentric oil. Change oil every three hundred hours. Check by removing oil plug at rear of machine. Use a pencil, screwdriver or some other convenient dip stick, and insert to the bend line on the bottom of the plate. 2" to 2-1/4" of oil should be on the dip stick. If oil is required, use SAE 30 oil. **Do not overfill.** The oil capacity for the S28 is 2-3/4 qts., S38 is 2-1/4 qts., and S52 is 2-1/4 qts.



Weekly - check belt tension. Belt is adjusted by loosening four engine bolts and adjusting the engine pusher bolt on front of the engine deck, until desired tension is obtained - then retighten engine bolts. **Using a straight edge maintain sheave alignment while tightening engine mounting bolts.** Proper tension is obtained when a two lbs. force is applied midway between the two sheaves and a 1/4 to 1/2" deflection of the belt is obtained. For best performance and longest belt life use **only Stone specified Kevlar belt.**

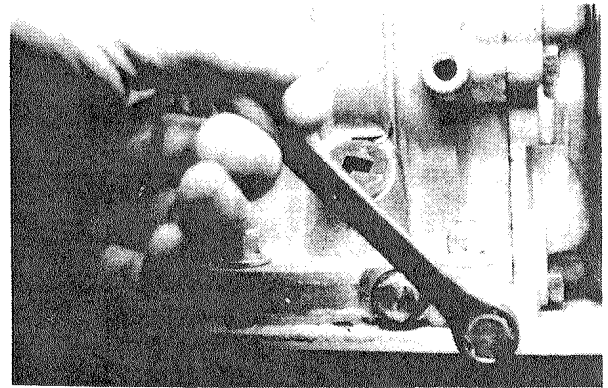
TORQUE CHART

Bolt Size	Wrench Size	Torque lb/ft.
1/4	7/16	6
5/16	1/2	12
3/8	9/16	22
1/2	3/4	56

BELT ADJUSTMENT

Loosen engine nuts (A).

Adjust belt tension by adjusting engine with pusher bolt (Q). Secure pusher bolt with jam nut (P). Secure engine nuts (A).



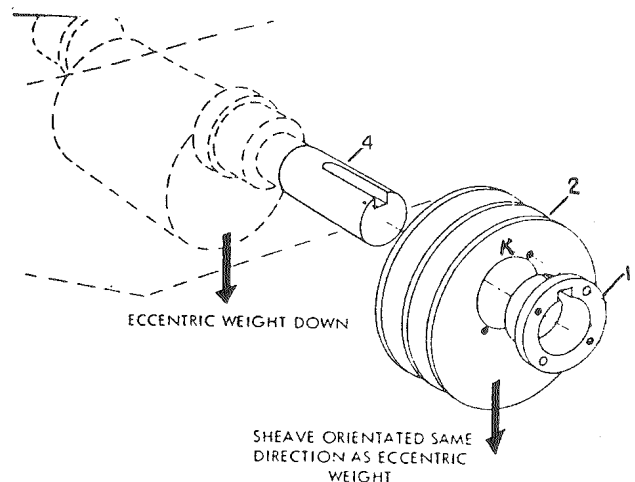
OFF SET ECCENTRIC SHEAVE

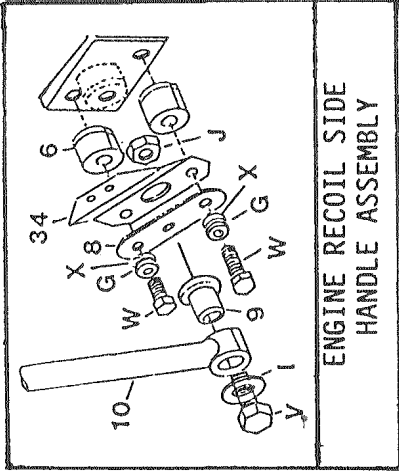
In order to ease assembly and insure the relationship between the eccentric and the off-set sheave is correct, we have added a keyway to the eccentric (4) and drilled and tapped the sheave (2) in a specific relationship to the off-set and the mounting holes in the taper lock bushing (1).

Note: Model S28 & S28A do not have an offset sheave.

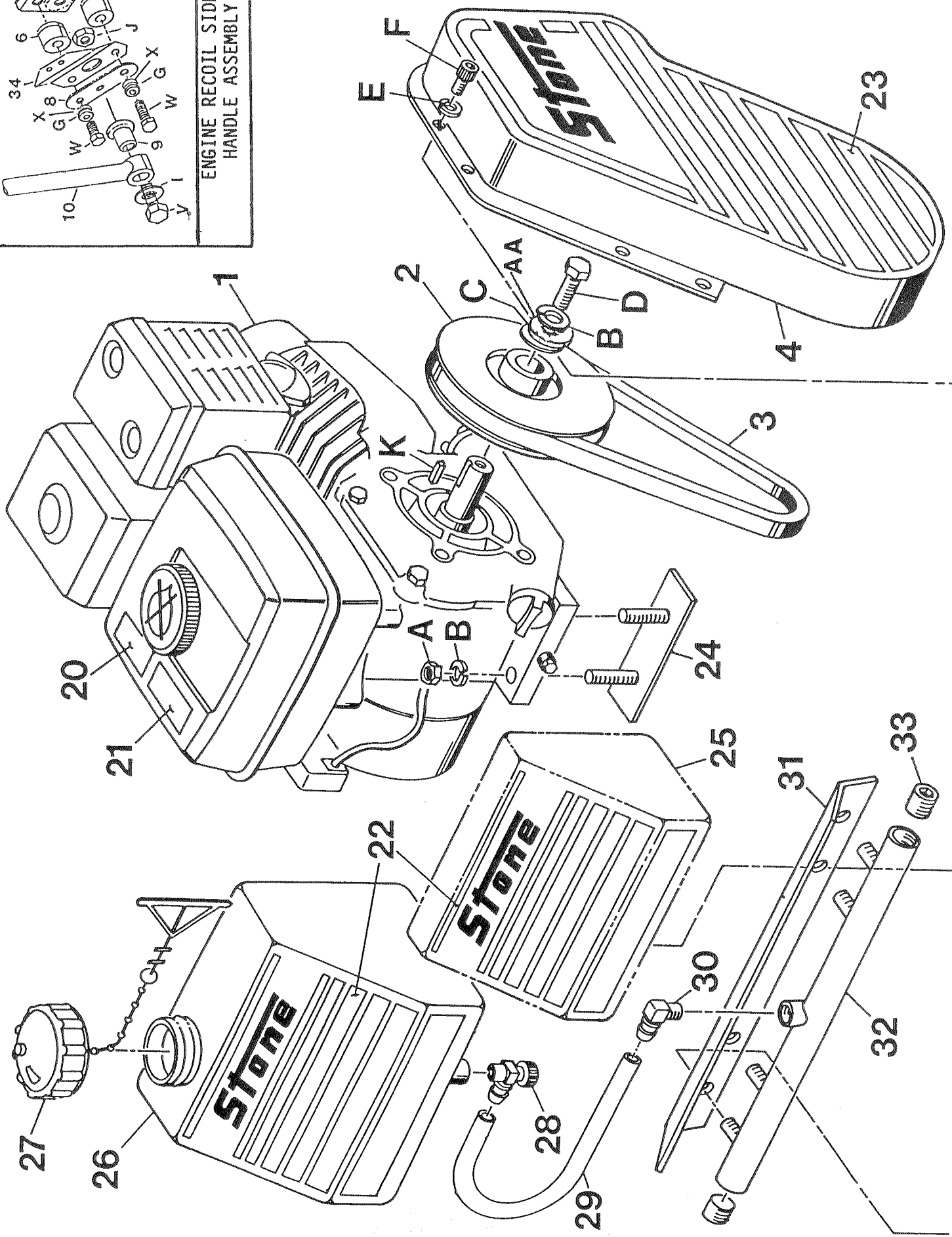
The "K" stamped on the sheave must be near the key when it is in the keyway.

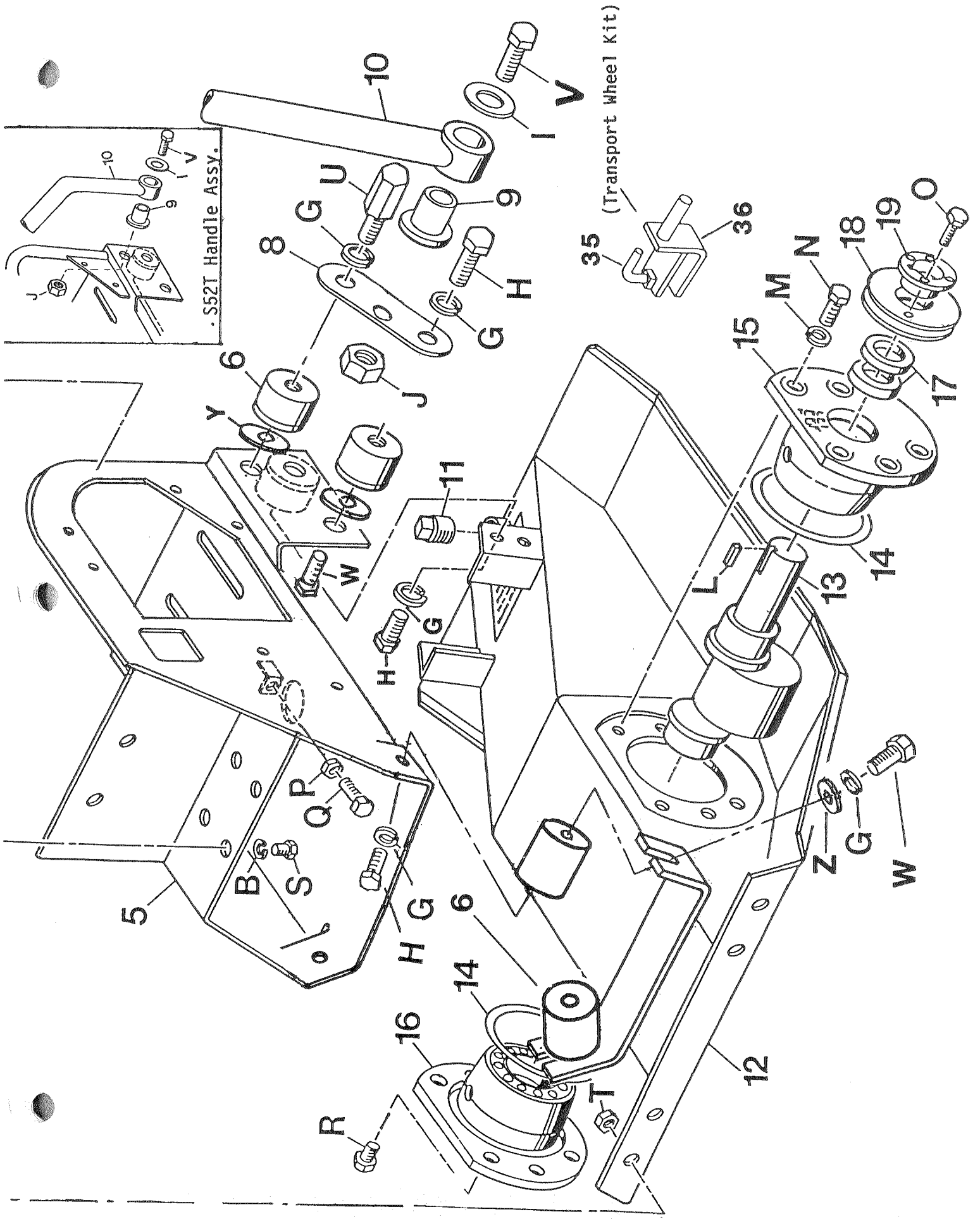
The proper alignment is therefore assured during assembly and any subsequent re-assembly during maintenance.





ENGINE RECOIL SIDE
HANDLE ASSEMBLY





S52T Handle Assy.

(Transport Wheel Kit)

5

B

S

O

P

H

G

6

16

14

6

R

T

12

H

G

11

W

Y

6

J

6

8

G

U

10

I

V

9

G

H

G

35

36

15

M

N

18

19

O

17

14

13

L

W

Z

G

6

ITEM	DESCRIPTION	QTY	PART NUMBER					
			S28	S28A	S38	S38A	S52	S52TR
1	4.6 HP Robin	1	30054	30054	30054	30054	30054	30054
1	5 HP Honda	1	30159	30159	30159	30159	30159	30159
1	5 HP B&S <i>30096</i>	1	22233	22233	22233	22233	22233	22233
2	Clutch	1	30101	30101	30101	30101	30101	30101
3	V-Belt Kevlar Cord	1	34711	34711	34711	34711	34711	34711
4	Belt Guard	1	29192	29192	29192	29192	29192	29192
5	Deck Weld <i>29720</i>	1	29270-2	29270-2	29270-2	29270-2	29270-2	29270-2
6	Shock Mount	8	47014	47014	47014	47014	47014	-
	Shock Mount	4	-	-	-	-	-	47014
8	Bracket Handle	2	27189-2	27189-2	27189-2	27189-2	27189-2	-
9	Urethane Bushing	2	32040	32040	32040	32040	32040	32040
10	Handle	1	21549-2	21549-2	21549-2	21549-2	21549-2	29382-2
11	Plug Pipe	1	46065	46065	46065	46065	46065	46065
12	Base Mach	1	29726-2	29726-2	29725-2	29725-2	29724-2	29727-2
13	Eccentric	1	21542	21452	21543	21543	21544	21544
**14	O Ring	2	32033	32033	32033	32033	32111	32111
15	Cap & Brg Sheave End	1	22060-2	22060-2	22062-2	22062-2	22064-2	22064-2
16	Cap & Brg Blind End	1	22061-2	22061-2	22063-2	22063-2	22065-2	22065-2
*17	Oil Seal	2	32047	32047	32047	32047	32047	32047
18	Offset Sheave	1	-	-	28314	28314	28314	28314
	Sheave BK32H	1	34713	34713	-	-	-	-
19	Bushing Taper Lock	1	35328	35328	35328	35328	35328	35328
20	Decal 3400 RPM	1	55017	55017	55017	55017	55017	55017
21	Decal Idle Engine	1	55015	55015	55015	55015	55015	55015
22	Decal Front	1	55141	55141	55141	55141	55141	55141
23	Decal Belt GD	1	55142	55142	55142	55142	55142	55142
24	Bracket Engine	2	21550-2	21550-2	21550-2	21550-2	21550-2	21550-2
25	Plate Trim	1	29107	-	29107	-	29107	29107
26	Water Tank	1	-	47214	-	47214	-	-
27	Cap	1	-	38195	-	38195	-	-
28	Valve & Strainer	1	-	46009	-	46009	-	-
29	Hose Urethane 1/4 ID	1	-	47250	-	47250	-	-
30	Elbow 90 Degree	1	-	34486	-	34486	-	-
31	Sprinkler GD	1	-	27263-2	-	27263-2	-	-
32	Sprinkler Tube	1	-	22443-2	-	22443-2	-	-
33	Plug 1/4 NPT	2	-	46161	-	46161	-	-
	Water Tank Kit	1	-	22580	-	22580	-	-
34	BRKT Handle Retainer	1	29454-2	29454-2	29454-2	29454-2	29454-2	-
35	L-Bolt	2	26354-2	26354-2	26354-2	26354-2	26354-2	26354-2
36	Transport	2	29642-2	29642-2	29642-2	29642-2	29642-2	29642-2
	Wheel 10 X 2.75	2	34213	34213	34213	34213	34213	34213
	(Not Shown)							
	Transport Wheel Kit	1	22603	22603	22603	22603	22603	22603

* Included in item #15

** Included in item #15 & 16

HARDWARE

A	NUTNY	4	80114	80114	80114	80114	80114	80114	80114
B*	WSHR 5/16 Med Split	11	-	80086	-	80086	-	-	-
		9	80086	-	80086	-	80086	80086	80086
C	WSHR 5/16 Wrot	1	80348	80348	80348	80348	80348	80348	80348
D*	HHCS 5/16-24 X 3/4	1	80095	80095	80095	80095	80095	80095	80095
E	WSHRL 1/4 Med Split	6	80116	80016	80016	80016	80016	80016	80016
F	SHCS 1/4-20 X 1/2	6	80271	80271	80271	80271	80271	80271	80271
G	WSHRL 1/2 Med Split	16	80117	80117	80117	80117	80117	80117	-
	WSHRL 1/2 Med Split	8	-	-	-	-	-	-	80117
H	HHCS 1/2-13 X 3/4	10	80113	80113	80113	80113	80113	80113	-
	HHCS 1/2-13 X 3/4	6	-	-	-	-	-	-	80113
I	WSHR Flat 1/2	2	80343	80343	80343	80343	80343	80343	80343
J	NUTNY 1/2-13	2	80051	80051	80051	80051	80051	80051	80051
K	Key 3/16 X 3/16 X 2	1	80611	80611	80611	80611	80611	80611	80611
L	Key 1/4 X 1/4 X 1-1/2	1	-	-	80061	80061	80061	80061	80061
M*	WSHRL 3/8 Med Split	12	80058	80058	80058	80058	80058	80058	80058
N	HHCS 3/8-24 X 1-1/4	12	80387	80387	80387	80387	80387	80387	80387
O	HHCS 1/4-20 X 1	2	80354	80354	80354	80354	80354	80354	80354
P	NUT 5/16-18	1	80244	80244	80244	80244	80244	80244	80244
Q	HHTB 5/16-18X1-3/4 GR2	1	80166	80166	80166	80166	80166	80166	80166
R	HHCS 3/8-24 X 1/2	1	80185	80185	80185	80185	80185	80185	80185
S	HHCS 5/16-18 X 3/4	6	-	80159	-	80159	-	-	-
	HHCS 5/16-18 X 3/4	4	80159	-	80159	-	80159	80159	80159
T	NUTNY 3/8-16	4	-	80056	-	80056	-	-	-
U*	Stud EZ Wheel	2	27265	27265	27265	27265	27265	27265	27265
V	HHCS 1/2-13 X 2-1/2	2	80194	80194	80194	80194	80194	80194	80194
W	HHCS 1/2-13 X 1 Plain	6	80378	80378	80378	80378	80378	80378	-
	HHCS 1/2-13 X 1 Plain	2	-	-	-	-	-	-	80378
X	WSHR FLAT 1/2 SAE	2	80343	80343	80343	80343	80343	80343	80343
Y	WSHR 9/16 X 1-3/4 X 1/4	2	26326	26326	26326	26326	26326	26326	-
Z	WSHR 1/2 Wrot ZN	2	80118	80118	80118	80118	80118	80118	80118
AA*	WSHR 1/4 Wrot	1	80347	80347	80347	80347	80347	80347	80347

B*,D* Plates Equipped With Robin Engines Use P/N 80186 - 3/8-24 X 3/4 Gr 5

M* Plates equipped with Robin Engines use (-1) less of item B and (+1) more of item M (on engine shaft).

U* Comes with transport wheel kit, otherwise item H.

AA* Plates Equipped With Robin Engines Washer not needed.

TROUBLE SHOOTING GUIDE

SYMPTOM	POSSIBLE CAUSE	CORRECTION
1. Engine fails to start or runs irregular.	a. Out of gasoline	a. Fill gas tank
	b. No spark	b. 1. Check for broke wire 2. Check magneto contact points. .020 inch on all engine.
	c. Spark plug fouled	c. Replace and set gap to .025 on Robin, .030 on B&S & Honda engines.
	d. Air cleaner clogged	d. Clean air cleaner. Follow procedure outlined in "Maintenance" section of this manual.
	e. Carburetor out of adjustment	e. 1. Close needle valve 2. Open 1-1/2 turns 3. With engine running under full load & compactor on an old tire, close the valve until the engine starts to lose speed. Then open until a smooth operation is obtained. 4. To adjust idle speed: a. Push throttle against idle stop. b. Adjust screw until an idle of 1700RPM is obtained. If clutch engages, lower idle speed. CLUTCH MUST NOT ENGAGE.
2. Plate does not vibrate at full speed S-28 5800 VPM S-38,S52 5400 VPM	a. Too much oil in eccentric housing	a. Check oil level as specified in "Maintenance" section of this manual.

SYMPTOM	POSSIBLE CAUSE	CORRECTION
Engines at 3400 RPM	<ul style="list-style-type: none"> b. Dirt in carburetor c. Loose belt d. Engine does not run up to speed 	<ul style="list-style-type: none"> b. Clean carburetor and adjust as in symptom 1. c. Adjust belt tension as in "Maintenance" section of this manual. d. Adjust governor.
3. Clutch is hot	<ul style="list-style-type: none"> a. Foreign object lodged against eccentric sheave b. Too much oil in eccentric housing c. Clutch slipping 	<ul style="list-style-type: none"> a. Clear obstruction. CAUTION: MAKE SURE UNIT IS SHUT OFF. b. Check oil level as specified in "Maintenance" section of this manual. c. Engine below operating RPM
4. Engine runs but plate does not vibrate	<ul style="list-style-type: none"> a. Broken belt b. Broken or worn out clutch? c. No key on engine shaft d. Eccentric seized 	<ul style="list-style-type: none"> a. Replace b. Replace c. Assembly key to shaft and clutch hub. d. Check to see if it is free turning. If not, disassemble.
5. Unit vibrates when throttle is in idle	<ul style="list-style-type: none"> a. Engine idles too fast b. Defective clutch 	<ul style="list-style-type: none"> 1. a. Free up linkage, if sticking. b. Adjust idle speed as in carburetor out of adjustment - above a. Check for bad parts and replace, if necessary.
6. Noisy unit	<ul style="list-style-type: none"> a. Loose or broken part b. Defective eccentric bearing c. Defective Clutch d. Engine below operating RPM. 	<ul style="list-style-type: none"> a. Tighten and/or replace. b. Replace. c. Replace. d. Consult engine manual for correct RPM.
7. No or insufficient water flow	<ul style="list-style-type: none"> a. Water tank empty b. Sprinkler shut off c. Plugged parts 	<ul style="list-style-type: none"> a. Fill tank. b. Open valve. c. Remove end fittings & sprinkler tube, if necessary, and clean.